

2015 SERVICE & ACCESSORY KITS





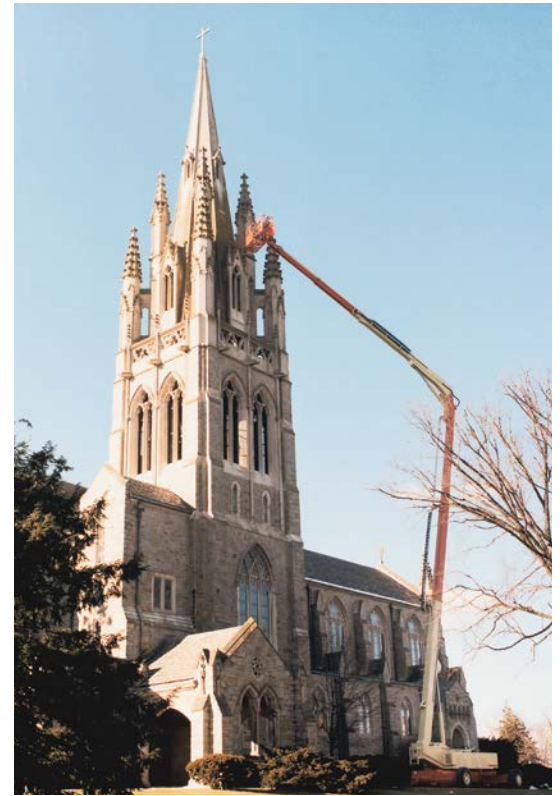
Aerial Boom Chain Kits	4
Turntable Bearing Installation Kits	5
Aerial Lift Wear Pad Kits	6
Aerial Wire Rope Kits	7
Aerial Boom Hose Kits	8
Aerial Decal Kits	9
Retrofit Steel Hood Kits	10–11
Platform Console Decal Kits	12
Platform Decal Kits	13
SkyPower® Kits	14
ClearSky® Kits	15
Boom Lift Filter Kits	16–21
Scissor Lift Filter Kits	22
ES Control Cable Kits/ES Scissor Decal Kits	23
Telehandler Chain Kits	24
Telehandler Wear Pad Kits	25
Telehandler Cab Enclosure Kits	26
Telehandler Vinyl Cab Enclosure Kits	27
Fall Arrest Platform Kits	28–29

Platform Soft Touch Kits	30
SkyGuard™ Installation Kits.....	31–33
Telehandler Fender Kits	34
Speed Limiting Shifter Kits	35
JLG® Telehandler Filter Kits	36–37
SkyTrak® Telehandler Filter Kits	38–39
Gradall® Telehandler Filter Kits.....	40
Lull® Telehandler Filter Kits	41
High Pressure/High Temperature O-Ring Kit	42
Standard O-Ring Kit	43
AMP/Tyco Connector Kit	44
Deutsch DT Connector Kit	45
Deutsch HD Connector Kit.....	46
Delphi/Packard Connector Kit.....	47
Miscellaneous Connector Kit.....	48
Fuse Kits.....	49

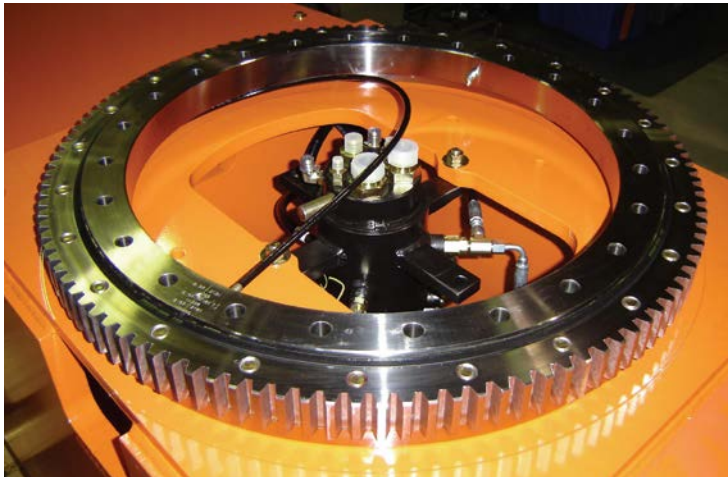
Aerial Boom Chain Kits

Features/Benefits

- Model-specific with serial number breaks
- Chain kits contain chains, sheaves, sheave pins and required hardware
- Adjuster kits contain chain adjuster assemblies and chain extension rod
- Great for boom reconditioning or required replacement



Machine Model	Chain Kit Part Number	Chain Adjuster Kit Part Number
60H (Prior to June 1985)	2900885	N/A
60H (June 1985 to Present)	2900884	N/A
80H/80HX (Prior to June 1985)	2910004	N/A
80H/80HX (June 1985 to Present)	2910003	N/A
100HX/100HX+10/110HXER (Prior to May 1992)	2910891	2910897
100HX/100HX+10/110HXER (May 1992 to Present)	2910892	2910898
110HX (Prior to May 1992)	2910170	2910896
110HX (May 1992 to Present)	2910006	2910007
100SX/110SXJ	2910892	2910898
110SX/120HX/120SXJ	2910006	2910007
150HAX (1992 and Prior)	2910964	2910967
150HAX (1993 to 0160034994)	2910965	2910967
150HAX (0160034995 to Present)	2910966	2910967



Turntable Bearing Installation Kits

The Turntable Bearing Installation Kits are designed for quick and efficient installation. For convenience, all kits include the necessary installation hardware.

Features/Benefits

- Simple ordering process with a kit; one part number replaces individual pieces
- Model- and serial-number-specific for easy reference
- Kits include hardware needed for installation



Note: Refer to Machine Service and Maintenance Manual for proper installation procedures.

Turntable Bearing Kits

Machine Model	Application	Kit Number
34HA	All	2915083
40H	All	2915079
45HA	with 8.75 in. & 9.5 in. Tires	2915083
45HA	with 12 in. Tires	2915084
45HAE	All	2915083
60H	All	2915091
60H+6	All	2915091
60HT/HTH	All	2915091
60HA	All	2915092
70H	All	2915091
80H	Prior to April 1986 with 500 lb capacity	2915098
80HX+6	April 1986 to June 1988 with 500 lb capacity	2915099
80HX	Prior to April 1986 with 500 lb capacity	2915098
80HX	April 1986 to June 1988 with 500 lb capacity	2915099
80HX	June 1988 to Present	1001143934
86HX	All	2915098
100HX	Prior to October 1989 with 500 lb capacity	1001143934
110HX	October 1989 to Present	2915069
120HX	All	2915069
150HAX	All	2915069
100SX	All	2915067
100SX/SXJ	All	2915067
120SX/SXJ	All	2915067
30E	All	2915075
35E	All	2915076
N35E	All	2915105
40E	All	2915101

Machine Model	Application	Kit Number
N40E	All	2915106
45E	All	2915101
E/M45A/AJ	All	2915101
T350	All	1001104625
T500J	All	1001104624
E300A/AJ/AJP	Prior to S/N 0300097889	2915103
E300A/AJ/AJP	S/N 0300097889 to S/N 0300138358	1001104629
E300A/AJ/AJP	S/N 0300138358 to Present	1001143933
E/M400A/AJ/AJP E/M450A/AJ/AJP	Prior to S/N 0300097888	2915104
E/M400A/AJ/AJP E/M450A/AJ/AJP	S/N 0300097888 to S/N 0300160801 except S/N 0300159798, 0300159795, 0300160088 and 0300160456	1001104626
E/M600J/JP	All	2915102
340AJ	All	1001143932
400S/460SJ	All	2915078
450A/AJ	All	2915081
450A/AJ Series II	Prior to S/N 0300069337	2915081
450A/AJ Series II	S/N 0300069337 to Present	1001160532
600A/AJ 600S/SJ 660SJ	All	2915087
600SC 660SJC 660SJC	All	2915096
601S	All	2915090
800A/AJ	Prior to S/N 0300041029	2915087
800A/AJ	S/N 0300041029 to S/N 0300068040	2915096
800A/AJ	S/N 0300068040 to Present	2915094
800S 860SJ	All	2915094
1100S/SJP 1200SJP 1350SJP 1500SJ	All	2915072
1850SJP	All	1001193630

Aerial Lift Wear Pad Kits

When your machine needs maintenance, JLG is your only true source of reliable and factory-approved parts. Our service kits are set up to help you identify the correct parts for the JLG® equipment in your fleet. Proper boom maintenance will help you achieve optimum productivity with your equipment.

Features/Benefits

- Model-specific with serial number breaks
- Contain wear pads, shims and required hardware
- Great for boom reconditioning or applicable OSHA-required boom teardowns



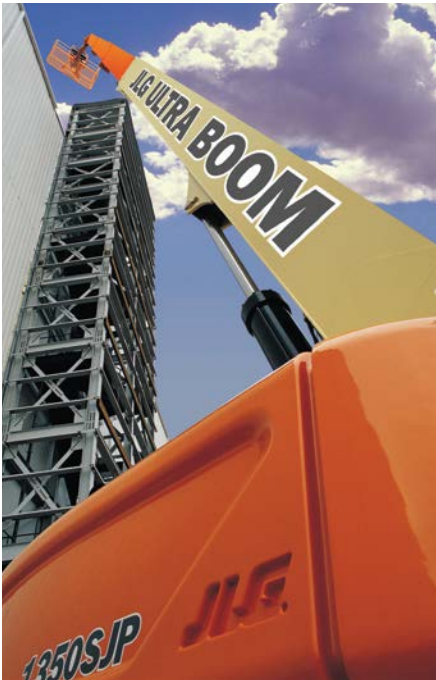
Machine Model	Part Number
40H/40HT	2900881
60H/66H/70H	2900882
40F	2900883
80H/80HX	2910002
100HX/100HX+10/110HXER/110HX (Prior to May 1992)	2910165
100HX/100HX+10/110HXER/110HX (May 1992 to Present)	2910166
120HX/100SX/110SX/110SXJ/120SXJ	2910166
150HAX	2910963
340AJ	1001188446
400S/460SJ	1001106689
450A/AJ Series II (USA Built Prior to S/N 0300160835)	1001188447
450A/AJ Series II (USA Built S/N 0300160835 to Present)	1001188448
600A/600AJ	2910167
600S/600SJ/660SJ (Prior to S/N 38808)	2910168
600S/600SJ/660SJ/601S (S/N 38808 to Present)	2910169
E600/E600J/E600JP/M600/M600J/M600JP	2910886
800A/800AJ	2910887
800S/860SJ	2910888
1200SJP/1350SJP	2910890
1250AJP	1001119136
1500SJ (Jib Boom)	1001143928
1500SJ (Main Boom)	1001143929
1850SJ	1001187507

Aerial Wire Rope Kits

When your machine needs maintenance, JLG is your only true source of reliable and factory-approved parts. Our service kits are set up to help you identify the correct parts for the JLG® equipment in your fleet. Proper boom maintenance will help you achieve optimum productivity with your equipment.

Features/Benefits

- Model-specific with serial number breaks
- Contain wire ropes, sheaves, sheave pins and required hardware
- Great for boom reconditioning or OSHA-required replacement

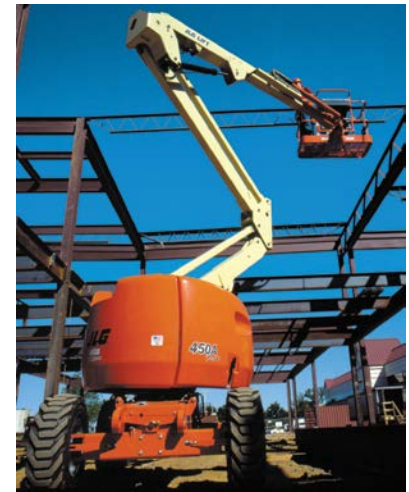


Machine Model	Kit Number
600S, 660SJ, 601S*	2910172*
600SJ*	2910173*
800S	100111231
860SJ	100111232
1100S, 1100SJP, 1200SJP	2910894
1350SJP	2910895
1500SJ	1001143927
1850SJ	1001187506

* Denotes ANSI spec only.

Aerial Boom Hose Kits

Everybody knows that downtime is expensive, and the best way to avoid it is by doing regularly scheduled preventive maintenance on your machine. One of the biggest and most labor intensive maintenance projects on a boom lift is the boom teardown. When the boom is torn down, there is no better time to replace the hoses in the power track, which can have wear that is challenging to detect. For this reason, JLG has put together kits to replace those upper boom hoses, complete with all the hoses that are exposed to the harsh elements and continuous motion associated with the power track. These are the same high-quality hoses we put on our machines from the factory, and JLG has already done the work to navigate through serial number breaks and build changes to ensure you get the right parts the first time, with only one part number to order. So the next time your machine is scheduled for boom maintenance, don't forget to purchase a boom hose kit, and take a step toward eliminating your unscheduled downtime.



Features/Benefits

- Model-specific with serial number breaks
- Contain all the hoses associated with the upper power track
- Great for boom reconditioning
- Eliminate extensive research

Machine Model	Serial Number	Part Number
400S	All	1001187481
450A	All	1001187483
450A Series II	Prior to 0300160836	1001187484
450A Series II	0300160836 to 0300166432	1001187485
450A Series II	0300166433 to Present	1001187486
450AJ	All	1001187487
450AJ Series II	Prior to 0300160836	1001187488
450AJ Series II	0300160836 to 0300166432	1001187489
450AJ Series II	0300166433 to Present	1001187490
460SJ	All	1001187482
600S	Prior to 0300181892	1001187491
600S	0300181892 to Present	1001187492
600SJ	Prior to 0300075606	1001187493
600SJ	0300075606 to 0300077912	1001187494
600SJ	0300077913 to 0300087000	1001187495
600SJ	0300087001 to 0300171769	1001187496
660SJ	Prior to 0300075606	1001187497
660SJ	0300075606 to 0300181891	1001187498

Machine Model	Serial Number	Part Number
660SJ	0300181892 to Present	1001187499
800S	All	1001187509
860SJ	All	1001187500
1200SJP	All	1001187501
1350SJP	All	1001187502
1500SJ	All	1001187787
1850SJ (UPPER)	Current	1001187503
E300AJP	All	1001198653
E300AJ	0300138358 to Present	1001198654
E300A	All	1001198655
E300AJ	Prior to 0300138358	1001198656
E/M400AJP	All	1001198657
E/M400A narrow	All	1001198658
E/M400AJ	All	1001198659
E/M450A	All	1001198660
E/M600JP	All	1001198661
E/M600J	All	1001198662
E/M600	All	1001198663

Aerial Decal Kits

Kits are designed with the intention of replacing the decals on the exterior of the machine. Kits will not contain decals located under the hood, inside covers or on the platform or control boxes.

Features/Benefits

- Model-specific with serial number breaks
- Simplified ordering process
- Great for reconditioning
- Eliminates extensive research



Part Number	Model/Serial Application	Description
2910478	400S / 460SJ	Kit, Machine Decal
2910910	450A/AJ Series II	Kit, Machine Decal
2910023	600A/AJ Prior to S/N 0300086150	Kit, Machine Decal
1001193631	600A/AJ S/N 0300086150 to 0300177361	Kit, Machine Decal
1001193632	600A/AJ S/N 0300177361 to Present	Kit, Machine Decal
1001193633	600S/SJ, 660SJ Prior to S/N 0300087912	Kit, Machine Decal
1001193634	600S/SJ, 660SJ S/N 0300087912 to Present	Kit, Machine Decal
1001193635	740AJ Prior to S/N 0300089982	Kit, Machine Decal
1001193636	740AJ S/N 0300089982 to Present	Kit, Machine Decal
1001193637	800A/AJ Prior to S/N 0300089982	Kit, Machine Decal
1001193638	800A/AJ S/N 0300089982 to Present	Kit, Machine Decal
1001193639	800S/860SJ Prior to S/N 0300088933	Kit, Machine Decal
1001193640	800S/860SJ S/N 0300088933 to Present	Kit, Machine Decal
1001193641	1250AJP Prior to S/N 0300089066	Kit, Machine Decal
1001193642	1250AJP S/N 0300089066 to Present	Kit, Machine Decal
1001193643	1200SJP Prior to S/N 0300089981	Kit, Machine Decal
1001193644	1350SJP Prior to S/N 0300089981	Kit, Machine Decal
1001193645	1200/1350SJP S/N 0300089981 to Present	Kit, Machine Decal
1001193646	1500SJ	Kit, Machine Decal
1001193647	1850SJ	Kit, Machine Decal


Retrofit Steel Hood Kits

Our factory-approved steel hoods are now available for your existing fleet. The retrofit kits consist of a complete steel hood assembly package, including mounting weldments and hardware, along with detailed instructions to guide you through the installation process. The robust nature of steel hoods provides additional protection from damaging elements, keeping your maintenance costs down. Furthermore, the painted hoods will maintain their color comparable with other steel components on the machine, improving aesthetics throughout the life of your equipment.

Features/Benefits

- Increased durability and improved long-term value
- Robust design
- Lower cost of ownership



 860 Series Telescopic Boom Lift
1001121710 (Deutz) 1001121711 (GM/CAT)



Retrofit Steel Hood Kits (cont.)



Machine Model	Engine	Kit Part Number
1200SJ, 1350SJ	All Except Deutz TCD 2.9L4	1001178043
800S	Deutz	1001121708
	GM/CAT	1001121709
860SJ	Deutz	1001121710
	GM/CAT	1001121711
800A/AJ	Deutz	1001121735
	CAT	1001121736
	GM	1001121737
740AJ	Deutz	1001125417
	GM/CAT	1001125415
600S, 600SJ, 660SJ, 600SC, 660SJC	Deutz	1001126286
	GM/CAT	1001126287


Platform Console Decal Kits

JLG has completed the busy work for you by establishing platform console decal kits. Kits have been added to reference serial number breaks to help save confusion for ordering and application. All decals are exact replacements and specific for models and serial number breaks.

Features/Benefits

- Kits contain all necessary decals for entire platform control box
- New kits added for specific machine models and serial number breaks
- Eliminate the research time required to identify all required decals



 Note: Kits are designed for ANSI spec machines. For machines built to other specifications please contact JLG.

Machine Model	JLG Part Number
All E/M40 & E/M45 Series	
E300 Series (Prior to S/N 138358	2910866
E/M400 & E/M450 Series (Prior to S/N 139889)	
E/M600 Series (Prior to S/N 139882)	
E300 Series (S/N 138358 to Present)	100119566
E/M400 & E/M450 Series (S/N 139889 to Present)	
E/M600 Series (S/N 139882 to Present)	
400S/460SJ w/out ADE	1001109194
400S/460SJ w/ ADE	2910865
450A/AJ	2910867
450A/AJ Series II (USA Built Prior to S/N 0300137906 & Belgium Built Prior to S/N 1300006701)	2915133
450A/AJ Series II (USA Built S/N 0300137906 to Present & Belgium Built S/N 1300006701 to Present)	100119559
600A/AJ	100119561
600S/SJ	100119562
600SC/600SJC/660SJC w/out ADE	2910868
600SC/600SJC/660SJC w/ ADE	1001109193
601S w/out ADE (Prior to S/N 62137)	1001109183
601S w/ ADE (S/N 62137 to Present)	2910870
800A/AJ (Prior to S/N 137975)	2910872
800A/AJ (S/N 137975 to Present)	100119563
800S/860SJ (Prior to S/N 137913)	2910871
800S/860SJ (S/N 137913 to Present)	100119564
100/110SX, 100/120SXJ	2910864
1100S	100119565
1200/1350SJP (Prior to S/N 79596)	2910873
1100SJP, 1200/1350SJP (S/N 79596 to Present), 1250AJP	1001109181
1500SJ	1001143930
1850SJ	1001187771




Platform Decal Kits

When replacing the platform on your JLG® machine, you also need the proper JLG standard decals. Locating the correct decals for your platform has been made easier with platform decal kits.

Features/Benefits

- Simple ordering process with one kit number per machine
- Great for new platforms or reconditioning existing platforms
- Kits are designed for specific machines

 Note: Refer to the appropriate manual for your machine to ensure proper decal installation. Kits are designed for ANSI spec machines.

Machine Model	JLG Part Number
30E	1001108709
35E, 40E, 45E	1001108710
E300A/AJ/AJP	1001108726
T350, T500	1001108729
E/M400A/AJP/AJPN	
E/M450A/AJ	1001108727
E/M45A/AJ	
400S/460SJ	1001108717
450A/AJ (Series I & II)	
600AJ, 600SJ, 660SJ	1001108725
600A, 600S	1001108718
E/M600J/JP	1001108728
601S	1001108719
800S	1001108722
860SJ	1001108723
800A	1001108720
800AJ	1001108721
100, 110SX, 110, 120SXJ	1001108713
1200SJP, 1350SJP, 1250AJP	1001108708
1500SJ	1001143931
1850SJ	1001187772
Fork Mounted (1001092280)	1001108707

SkyPower® Kits

The JLG SkyPower® Package enables the addition of many productivity enhancing accessories. Machines with the SkyPower System are equipped with a self-contained 7500W generator with a power cable and an integrated air line. In addition to providing self-contained AC power to operate hand tools, the SkyPower system enables other accessories to be conveniently added, including SkyWelder® and SkyCutter® packages.

Features/Benefits

- Increased machine productivity
- Increased machine value
- Fuel savings when compared to a ground-based generator
- No need for generator repositioning
- Six-hour installation time



Power “JLG Workstation in the Sky®” Accessories

A self-contained 7500W generator provides the power to the platform for tools, lights or JLG accessories, creating a “Workstation in the Sky®.” The integrated power cable and air line allow you to quickly attach or detach a variety of JLG accessories.



SkyPower Kits

Machine Model	Engine Brand	Kit Part Number
400S	GM Engine	100118105
400S	Deutz Engine	100116162
600S	Deutz Engine	100116159
800S	Deutz Engine	100116163



Note: Features and benefits from ClearSky on retrofitted machines may be limited, based on year, make and model of machine.

How Do I Place an Order?

- Call our Aftermarket Parts Call Center at 877-554-5438
- Visit www.clearskyjlg.com for more information
- Contact the ClearSky Team for activation and subscription

ClearSky Kit Options

Machine Model	Subscription/Country	Kit Part Number
1200SJP, 1350SJP, 1250AJP	Gold/US Non-UGM	1001117250
600S, 800A/AJ, 800S/SJ, 740AJ, 600SC	Gold/US Non-UGM	1001117251
600A	Gold/US Non-UGM	1001117252
400S	Gold/US Non-UGM	1001117253
450A, 510A	Gold/US Non-UGM	1001117254
1200SJP, 1350SJP, 1250AJP	Gold/US UGM	1001119938
600S, 800A/AJ, 800S/SJ, 740AJ, 600SC	Gold/US UGM	1001119939
600A	Gold/US UGM	1001119942
400S	Gold/US UGM	1001119943
450A / 510A	Gold/US UGM	1001119945
Any JLG, Non-JLG Unit	Bronze/US Non-UGM	1001118234
1200SJP, 1350SJP, 1250AJP	Gold/CAN Non-UGM	1001117256
600S, 800A/AJ, 800S/860SJ, 740AJ, 600SC	Gold/CAN Non-UGM	1001117258
600A	Gold/CAN Non-UGM	1001117259
400S	Gold/CAN Non-UGM	1001117260
450A, 510A	Gold/CAN Non-UGM	1001117261
1200SJP, 1350SJP, 1250AJP	Gold/CAN UGM	1001119946
600S, 800A/AJ, 800S/SJ, 740AJ, 600SC	Gold/CAN UGM	1001119947
600A	Gold/CAN UGM	1001119948
400S	Gold/CAN UGM	1001119949
450A, 510A	Gold/CAN UGM	1001119950
Any JLG, Non-JLG Unit	Bronze/CAN Non-UGM	1001118235

ClearSky® Kits

Available as and option on new units or retrofitted to existing aerial work platforms, ClearSky® provides constant visibility for your equipment, in real time, 24 hours a day, 7 days a week.

Features/Benefits

- Each kit includes:
 - TCU (Tele-Communications Unit) Box with GPS antennae and hardware
 - Decals
 - Installation, diagnostics and replacement parts manual
 - Quick start installation guide
 - Web Center user guide
- All GPS and cellular data is routed through our ClearSky Web Center and must be maintained through Online Express, and individual access must indicate ClearSky option at the time of machine purchase
- Remote access view/functionality includes:
 - Manage/view machine alerts—Receive notifications on faults, alarms and ignition/engine status
 - Create/manage geofences—Receive notifications of fence violations, view breadcrumbs, create placemarks
 - Displays and reports—Includes on-demand option
 - Maintenance planner—Receive notification reminders of upcoming service
- Eliminate the research time required to identify all required decals

Boom Lift Filter Kits

Maintain your JLG® boom lift with proper filter changes and scheduled maintenance. Protect your investment and reduce future cost of ownership with JLG filter kits.

Convenience and Peace of Mind

Order one part number and receive factory-approved filters for your specific machine.

Included in Kit (when applicable):

- Engine oil filter
- Primary and secondary fuel filters
- Primary and secondary air filters
- Hydraulic pressure/charge and return filters
- Platform hydraulic filter



Model	Application	Filter Kit Number	Hydraulic Breather (not included in kit)
34HA	Deutz Engine - Prior to August 1995	2910438	1340046
	Deutz Engine - August 1995 to Present	1001110986	
40H/40H+6	Deutz Engine - F2L511 & F3L1011	1001111016	1340046
	Deutz Engine - F3L912	1001110984	
	Ford Engine - March 1995 to Present	2910942	
40HA	Deutz Engine	1001110983	1340046
45HA	Deutz Engine	1001110987	1340046
60H/60H+6	Deutz Engine	1001110984	1340021 (Prior to July 1986)
	Ford Engine - March 1995 to Present	2910942	1340046 (July 1986 to Present)
60HA	Deutz Engine - F31011	1001111016	1340046
	Ford Engine - March 1995 to Present	2910942	
70H	Deutz Engine	1001110984	1340021 (Prior to July 1986)
	Ford Engine - March 1995 to Present	2910942	1340046 (July 1986 to Present)
80H/80H+6/ 80HX/86HX	Deutz Engine	1001110984	1340021 (Prior to July 1986)
	Ford Engine - March 1995 to Present	2910942	1340046 (July 1986 to Present)
100HX/100HX+6 110HX/110HXER	Deutz Engine	1001110984	1340046
	Ford Engine - March 1995 to Present	2910942	

Boom Lift Filter Kits (cont.)

Model	Application	Filter Kit Number	Hydraulic Breather (not included in kit)
120HX	Deutz Engine	100111010	1340046
150HAX	Cummins Engine - Prior to S/N 0300080240	1001110985	1340046
	Cummins Engine - S/N 0300080240 to Present	1001151648	
110SXJ/120SXJ	Deutz Engine	100111010	1340046
	Ford Engine	1001151647	
40ic/45ic	Yanmar Engine	1001110988	7014803
340AJ	GM Engine	1001151649	70002812
	Kubota Engine	1001133070	
400S/460SJ	Caterpillar Engine - Prior to S/N 0300087630	1001110998	1120301 (Prior to S/N 0300071424) 7024444 (S/N 0300071424 to Present)
	Caterpillar Engine - S/N 0300087630 to Present	1001111000	
	Deutz Engine - Prior to S/N 0300087630	1001110997	
	Deutz Engine - S/N 0300087630 to S/N 0300161285	1001110999	
	Deutz Engine - S/N 0300161285 to S/N 0300181723 except 0300175937	1001156539	
	Deutz Engine - S/N 0300182240 to Present (D2011 Engine Only)	1001156539	
	Deutz Engine - S/N 0300181723 to Present including 0300175937 (TD2.9L4 Engine Only)	1001181146	
	Ford Engine - Prior to S/N 0300087630	2910949	
	Ford Engine - S/N 0300087630 to Present	1001114125	
	GM Engine	1001114131	
450A/AJ	Perkins Engine - w/o Universal Ground Module	1001111001	7014811
	Perkins Engine - w/ Universal Ground Module	1001114122	
	Deutz Engine	1001110989	
450A/AJ	Ford Engine - Prior to S/N 0300039831	2910455	7014811
	Ford Engine - S/N 0300039831 to S/N 0300046089	1001114117	
	Ford Engine - S/N 0300046089 to Present	1001114135	
450A/AJ Series II	Caterpillar Engine - Prior to S/N 0300087631	1001110998	7014811 (Prior to S/N 0300124000 & S/N 1300006000) 7024444 (S/N 0300124000 & 1300006000 to Present)
	Caterpillar Engine (Mechanical Cooling Fan) - S/N 0300087631 to S/N 0300160835 w/o UGM	1001151644	
	Caterpillar Engine (Electric Cooling Fan) - S/N 0300087631 to S/N 0300160835 w/o UGM	1001111000	
	Caterpillar Engine - S/N 0300087631 to S/N 0300160835 w/ Universal Ground Module	1001111000	
	Caterpillar Engine - S/N 0300160835 to Present	1001156538	
	Deutz Engine - USA Built Prior to S/N 0300087631, Belgium Built Prior to S/N 1300001243	1001110997	
	Deutz Engine - USA Built S/N 0300087631 to S/N 0300160835, Belgium Built S/N 1300001243 to Present	1001110999	
	Deutz Engine - USA Built S/N 0300160835 to S/N 0300182240 except 0300175030	1001156539	
Deutz Engine - S/N 0300182240 to Present (D2011 Engine Only)	1001156539		

Boom Lift Filter Kits (cont.)

Model	Application	Filter Kit Number	Hydraulic Breather (not included in kit)
450A/AJ Series II	Deutz Engine - S/N 0300182240 to Present including 0300175030 (TD2.9L4 Engine Only)	1001181146	7014811 (Prior to S/N 0300124000 & S/N 1300006000) 7024444 (S/N 0300124000 & 1300006000 to Present)
	Ford Engine - Prior to S/N 0300087631	2910949	
	Ford Engine - S/N 0300087631 to Present	1001114125	
	GM Engine	1001114131	
	Perkins Engine (Electric Cooling Fan) - w/o Universal Ground Module	1001111001	
	Perkins Engine (Mechanical Cooling Fan) - w/o Universal Ground Module	1001151645	
510AJ	Perkins Engine - w/ Universal Ground Module	1001114122	7024444
	Deutz Engine - Prior to S/N 1300001243	1001110997	
	Deutz Engine - S/N 1300001243 to Present	1001110999	
	Perkins Engine - w/o Universal Ground Module	1001111001	
600A/AJ	Perkins Engine - w/ Universal Ground Module	1001114122	7014811 (Prior to S/N 0300072295) 7024444 (S/N 0300072295 to Present)
	Caterpillar Engine - Prior to S/N 0300084829	1001110994	
	Caterpillar Engine - S/N 0300084829 to Present	1001110991	
	Deutz Engine - Prior to S/N 0300084829	1001110993	
	Deutz Engine - S/N 0300084829 to S/N 0300177361	1001110990	
	Deutz Engine - S/N 0300177362 to S/N 0300181926	1001166960	
	Deutz Engine - S/N 0300181927 to Present (D2011 Engine Only)	1001166960	
	Deutz Engine - S/N 0300181927 to Present (TD2.9L4 Engine Only)	1001181148	
	Ford Engine - Carbureted - Prior to S/N 0300037117	1001114038	
	Ford Engine - Carbureted - S/N 0300037117 to Present	2910462	
	Ford Engine - Fuel Injected - Prior to S/N 0300084829	1001114039	
Ford Engine - Fuel Injected - S/N 0300084829 to Present	1001114042		
600S/SJ/660SJ	GM Engine	1001114127	7014811 (Prior to S/N 0300068000) 7024444 (S/N 0300068000 to Present)
	Caterpillar Engine - Prior to S/N 0300084827	1001110994	
	Caterpillar Engine - S/N 0300084827 to Present	1001110991	
	Deutz Engine - Prior to S/N 0300030041	1001114043	
	Deutz Engine - S/N 0300030041 to S/N 0300084827	1001110993	
	Deutz Engine - S/N 0300084827 to S/N 0300087000	1001114036	
	Deutz Engine - S/N 0300087000 to Present	1001110990	
	Deutz Engine - S/N 0300171769 to 0300181275 except 0300174004	1001166960	
	Deutz Engine - S/N 0300181275 to Present (D2011 Engine Only)	1001166960	
	Deutz Engine - S/N 0300181275 to Present including 0300174004 (TD2.9L4 Engine Only)	1001181148	
Ford Engine - Prior to S/N 0300037117	1001114038		

Boom Lift Filter Kits (cont.)

Model	Application	Filter Kit Number	Hydraulic Breather (not included in kit)
600S/SJ/660SJ	Ford Engine - S/N 0300037117 to S/N 0300048907	2910462	7014811 (Prior to S/N 0300068000) 7024444 (S/N 0300068000 to Present)
	Ford Engine - S/N 0300048907 to S/N 0300084827	1001114039	
	Ford Engine - S/N 0300084827 to Present	1001114042	
	GM Engine	1001114127	
600S/SJC/ 660SJC	Caterpillar Engine - Prior to S/N 0300085110	1001110994	7014811 (Prior to S/N 0300068129) 7024444 (S/N 0300068129 to Present)
	Caterpillar Engine - S/N 0300085110 to Present	1001110991	
	Deutz Engine - Prior to S/N 0300077723	1001114136	
	Deutz Engine - S/N 0300077723 to S/N 0300085110	1001110993	
	Deutz Engine - S/N 0300085110 to S/N 0300092883	1001114036	
	Deutz Engine - S/N 0300092883 to 0300182216	1001110990	
	Deutz Engine - S/N 0300182216 to Present including 0300174703 (TD2.9L4 Engine Only)	1001181148	
601S	Deutz Engine - 3 Cylinder - Prior to S/N 0300044387	1001114043	7014811 (Prior to S/N 0300068132) 7024444 (S/N 0300068132 to Present)
	Deutz Engine - 3 Cylinder - S/N 0300044387 to S/N 0300078257	1001110995	
	Deutz Engine - 3 Cylinder - S/N 0300078257 to Present	1001110992	
	Deutz Engine - 4 Cylinder Upgrade - Prior to S/N 0300044387	1001114136	
	Deutz Engine - 4 Cylinder Upgrade - S/N 0300044387 to Present	1001110990	
	Ford Engine - Prior to S/N 0300044387	2910462	
	Ford Engine - S/N 0300044387 to S/N 0300058209	1001114046	
Ford Engine - S/N 0300058209 to Present	1001114042		
680S	Caterpillar Engine - Prior to S/N 0300141319	1001114054	7024444
	Caterpillar Engine - S/N 0300141319 to Present	1001114055	
	Deutz Engine - Prior to S/N 0300141319	1001111004	
	Deutz Engine - S/N 0300141320 to S/N 0300189340	1001114049	
	Deutz Engine - S/N 0300141320 to Present (D2011 Engine Only)	1001114049	
	Deutz Engine - S/N 0300189341 to Present (TD2.9L4 Engine Only)	1001181149	
	GM Engine - Prior to S/N 0300141319	1001113981	
GM Engine - S/N 0300141319 to Present	1001151650		
740AJ	Deutz Engine - Prior to S/N 0300087266	1001110996	7014817 (Prior to S/N 0300071311) 7024444 (S/N 0300071311 to Present)
	Deutz Engine - S/N 0300087266 to Present (D2011 Engine Only)	1001111014	
	Deutz Engine - S/N 0300185828 to Present (TD2.9L4 Engine Only)	1001181150	
	Ford Engine - Prior to S/N 0300087266	1001114116	
	Ford Engine - S/N 0300087266 to Present	1001114115	
	GM Engine	1001114056	

Boom Lift Filter Kits (cont.)

Model	Application	Filter Kit Number	Hydraulic Breather (not included in kit)
800A/AJ	Caterpillar Engine - Prior to S/N 0300087266	2915139	7014817 (Prior to S/N 0300071311) 7024444 (S/N 0300071311 to Present)
	Caterpillar Engine - S/N 0300087266 to Present	1001111015	
	Deutz Engine - Prior to S/N 0300077500	2910467	
	Deutz Engine - S/N 0300077500 to S/N 0300087266	1001110996	
	Deutz Engine - S/N 0300087266 to Present (D2011 Engine Only)	1001111014	
	Deutz Engine - S/N 0300183034 to Present (TD2.9L4 Engine Only)	1001181150	
	Ford Engine - Prior to S/N 0300048538	2910465	
	Ford Engine - S/N 0300048538 to S/N 0300087266 (Non-UL Machines)	1001114116	
	Ford Engine - S/N 0300087266 to Present	1001114115	
800S/860SJ	GM Engine	1001114056	7014811 (Prior to S/N 0300071452) 7024444 (S/N 0300071452 to Present)
	Caterpillar Engine - Prior to S/N 0300069206	2915140	
	Caterpillar Engine - S/N 0300069206 to S/N 0300087262	1001114053	
	Caterpillar Engine - S/N 0300087262 to S/N 0300141319	1001114054	
	Caterpillar Engine - S/N 0300141319 to Present	1001114055	
	Deutz Engine - Prior to S/N 0300069206	2910928	
	Deutz Engine - S/N 0300069206 to S/N 0300077586	2910799	
	Deutz Engine - S/N 0300077586 to S/N 0300087262	1001111006	
	Deutz Engine - S/N 0300087262 to S/N 0300092776	1001114048	
	Deutz Engine - S/N 0300092776 to S/N 0300141319	1001111004	
	Deutz Engine - S/N 0300141320 to Present (D2011 Engine Only)	1001114049	
	Deutz Engine - S/N 0300182741 to Present (TD2.9L4 Engine Only)	1001181149	
	Ford Engine - Prior to S/N 0300069206	2910950	
	Ford Engine - S/N 0300069206 to S/N 0300087262	1001114050	
	Ford Engine - S/N 0300087262 to Present	1001114052	
1100S/SJP	GM Engine - Prior to S/N 0300141319	1001113981	1001110940 (1100SJP w/Hostile Environment & All 1100S) 7024444 (1100SJP w/o Hostile Environment)
	GM Engine - S/N 0300141319 to Present	1001151650	
	Deutz Engine	1001133071	
1200SJP/1350SJP	Caterpillar Engine - S/N 0300139709 to Present	1001137029	7024444
	Deutz Engine - Prior to S/N 0300087579	1001111007	
	Deutz Engine - S/N 0300087579 to S/N 0300092150	1001111005	
	Deutz Engine - S/N 0300092150 to S/N 0300139709	1001115326	

Boom Lift Filter Kits (cont.)

Model	Application	Filter Kit Number	Hydraulic Breather (not included in kit)
1200SJP/1350SJP	Deutz Engine - S/N 0300139709 to Present except 0300180274 (TD2011 Engine Only)	1001137027	7024444
	Deutz Engine - S/N 0300182121 to Present including 0300180274 (TCD2.9L4 Engine Only)	1001181151	
1250AJP	Caterpillar Engine - S/N 0300139396 to Present	1001137030	7024444
	Deutz Engine - Prior to S/N 0300087575	1001111008	
	Deutz Engine - S/N 0300087575 to S/N 0300099915	1001111009	
	Deutz Engine - S/N 0300099915 to S/N 0300139396	1001115330	
	Deutz Engine - S/N 0300139396 to Present (TD2011 Engine Only)	1001137028	
	Deutz Engine - S/N 0300182104 to Present (TCD2.9L4 Engine Only)	1001181151	
1500SJ	Deutz Engine -Prior to S/N 0300182136	1001133071	7024444
	Deutz Engine - S/N 0300182136 to Present (TD2011 Engine Only)	1001133071	
	Deutz Engine - S/N 0300182136 to Present (TCD2.9L4 Engine Only)	1001181151	
1850SJ	Deutz Engine	1001182236	Breather included
M45A/AJ	Yanmar Engine	1001111011	7021320
M400A/AJ/ M450A/AJ	Yanmar Engine - Prior to S/N 0300088539	1001111011	7021320
	Kubota Engine - S/N 0300088539 to Present	1001111013	
M600J/JP	Yanmar Engine - Prior to S/N 0300088375	1001111002	7023269
	Kubota Engine - S/N 0300088375 to Present	1001111003	
T350/T500J	Honda Engine	1001091766	7027638
	Electric Powered	1001091767	



Scissor Lift Filter Kits

- Order one part number to save time
- Kits include factory approved filters
- Help maintain and protect your investment
- Kits contain all filters except hydraulic filter




Model	Kit Number	Application	Hydraulic Breather (not included in filter kit)
26MRT	1001111696	Yanmar Diesel Engine	7014811
26MRT	2910932	Vanguard Gas Engine - Prior to S/N 0200048113	7014811
26MRT	1001150359	Vanguard Gas Engine - S/N 0200048113 to Present	7014811
260MRT	1001111691	Kubota Diesel Engine - Prior to S/N 0200141689	7014811 - Prior to S/N 0200114670 7026575 - S/N 0200114670 to S/N 0200141689
260MRT	1001111698	Kubota Diesel Engine - S/N 0200141689 to Present	7026575
260MRT	2910934	Kubota Gas Engine - w/Metal Air Cleaner	7014811
260MRT	1001150358	Kubota Gas Engine - w/Plastic Air Cleaner	7014811 - Prior to S/N 0200114670 7026575 - S/N 0200114670 to Present
330CRT/400CRT	1001111691	Kubota Diesel Engine	7014811
330CRT/400CRT	2910934	Kubota Gas Engine	7014811
M3369/M4069	1001111699	Yanmar Diesel Engine	1120534
M3369/M4069	1001111710	Kubota Diesel Engine	1120534
25RTS/33RTS/40RTS	1001111693	Deutz Diesel Engine	1340062
25RTS/33RTS/40RTS	2910943	Ford Gas Engine	1340062
400RTS/500RTS	1001111695	Deutz Diesel Engine - Prior to S/N 0200121830	1340062 - Prior to S/N 0200112737 7024444 - S/N 0200112737 to S/N 0200121830
400RTS/500RTS	1001111694	Deutz Diesel Engine - S/N 0200121830 to Present	7024444
400RTS/500RTS	2910943	Ford Gasoline Engine - Prior to S/N 0200046528	1340062
400RTS/500RTS	2910474	Ford Gasoline Engine - S/N 0200046528 to Present	1340062 - Prior to S/N 0200112737 7024444 - S/N 0200112737 to Present
3394RT/4394RT	1001111697	Deutz Diesel Engine - Prior to S/N 0200191606	7014811
3394RT/4394RT	1001114030	Deutz Diesel Engine - S/N 0200191606 to 0200224892	70002113
3394RT/4394RT	1001181152	Deutz Diesel Engine - S/N 0200224893 to Present	70002113
3394RT/4394RT	2910951	Ford Gasoline Engine	7014811
3394RT/4394RT	1001150356	GM Gasoline Engine - Prior to S/N 0200191606	7014811
3394RT/4394RT	1001150357	GM Gasoline Engine - S/N 0200191606 to Present	70002113
67SL	1001111713	Deutz Diesel Engine	H000241
80SL	1001111714	Deutz Diesel Engine	H000241

Refer to Machine Service and Maintenance Manual for proper service intervals and procedures.

ES Control Cable Kits

Coiled control cable kits are available for all JLG® ES Scissor Lifts. These kits are designed to retrofit those machines built prior to May 2007, but also make it simple to replace the control cable on newer models as well. The coiled cable provides better management of the platform workspace and allows the platform extension to move in and out without interference, all while keeping the cable out of the operator's way and off of the platform floor. These kits come complete with installation instructions, new corner hooks and any required hardware, all at a substantial savings over buying the cable alone.

 Note: ES Series control box with coiled cable and curved storage bracket.



ES Coiled Cable Kits

Machine Model	Kit Number
1930ES	1001104466
2030ES/2630ES	1001104467
2646ES/3246ES	1001104468



ES Scissor Decal Kits

Has time on the job site been unkind to your ES Scissor? Give it a facelift. JLG now has decal kits available for the ES line of scissor lifts. These kits make locating the correct decals for your machine easier. Purchase one part number and receive all of the decals required.

Features & Benefits

- Six model-specific decal kits that include all decals necessary for your machine
- One convenient part number instead of time consuming research
- Reduced cost by purchasing a kit over individual components
- Ideal for reconditioning your machine

ES Decal Kits

Machine Model	Kit Type	Kit Number
1230ES	Complete Decal Kit	1001149794
1930ES	Complete Decal Kit	1001149795
2030ES	Complete Decal Kit	1001149796
2630ES	Complete Decal Kit	1001149797
2646ES	Complete Decal Kit	1001149798
3246ES	Complete Decal Kit	1001149799

Telehandler Chain Kits

JLG® Aftermarket Parts now offers chain replacement kits for JLG and Gradall® telehandlers. Easy to research and simple to order, a single part number will provide everything needed to replace your telehandler chains.

Features/Benefits

- Kits include all components required to replace telehandler boom chains or cables
- Model-specific for easy ordering
- Chains, clevises, pins, retaining rings, chain blocks, stop springs and hardware included
- Save money by consolidating parts
- Save time by eliminating costly research
- Receive all parts in one convenient shipment
- Easy ordering through Online Express
- Free freight on economy orders



Note: Sheaves and sheave hardware sold separately.

Machine Brand	Machine Model	Serial Number	Description	Kit Part Number
JLG	G6-42A	All	Complete Chain Kit	1001106686
JLG	G6-42P	All	Complete Chain Kit	1001106686
JLG	G9-43A	All	Complete Chain Kit	1001109226
JLG	G10-55A	All	Complete Chain Kit	1001110107
JLG	G12-55A	All	Complete Chain Kit	1001110105
Gradall	534D9-45	0644119 to Present	Complete Chain Kit	1001106684
Gradall	534D10-45	0366089 to Present	Complete Chain Kit	1001106684
Gradall	544D-55	All	Complete Chain Kit	1001106685
SkyTrak	6036	14834-19988 0160002345 to Present	Boom Extend Chain Kit	8024025
SkyTrak	6036	14834-19988 0160002345 to Present	Boom Retract Chain Kit	8024026
SkyTrak	6042	All	Boom Extend Chain Kit	8024032
SkyTrak	6042	All	Boom Retract Chain Kit	8024033
SkyTrak	8042/10042	13198-19987 0160002332 to Present	Boom Extend Chain Kit	8024032
SkyTrak	8042/10042	13198-19987 0160002332 to Present	Boom Retract Chain Kit	8024033
SkyTrak	10054	13198-19987 **0160002332 to Present	Boom Extend Chain Kit	8024032
SkyTrak	10054	13198-19987 ***0160002332 to Present	Boom Extend Chain Kit	8024053
SkyTrak	10054	13198-19987 0160002332 to Present	Boom Retract Chain Kit	8024033
Lull	644E-42	All	Boom Extend Chain Kit	8024054
Lull	644E-42	All	Boom Retract Chain Kit	8024055
Lull	944E-42	All	Boom Extend Chain Kit	8024054
Lull	944E-42	All	Boom Retract Chain Kit	8024056
Lull	1044C-54 Series II	All	Mid-Boom Dual Extend	71397735
Lull	1044C-54 Series II	All	Mid-Boom Single Retract	71397745
Lull	1044C-54 Series II	All	Inner Boom Single Extend	71397725
Lull	1044C-54 Series II	All	Inner Boom Single Retract	71397755

**Chain kit will service secondary intermediate boom.

***Chain kit will service inner boom extend.



Telehandler Wear Pad Kits

When your machine needs maintenance, JLG is your only true source of reliable and factory-approved parts. Our service kits are set up to help you identify the correct parts for the JLG® equipment in your fleet. Proper boom maintenance will help you achieve optimum productivity with your equipment.

Features/Benefits

- Model-specific with serial number breaks
- Kit includes wear pads, shims, spacers and required hardware
- Eliminate extensive research
- A must for boom reconditioning

Wear Pad Kits

Machine Brand	Machine Model	Kit Number
JLG	G5-18A	1001119788
JLG	G5-19A	1001119793
JLG	G6-23A	1001119796
JLG	G6-42A	2910983
JLG	G9-43A	2910984
JLG	G10-43A	2910984
JLG	G10-55A (Prior to S/N 0160038500 except S/N 0160038324, 0160038489 & 0160038493 including S/N 0160038505 & 0160038507)	2910980
JLG	G10-55A (S/N 0160038500 to Present except S/N 0160038505 & 0160038507 including S/N 0160038324, 0160038489 & 0160038493)	1001119797
JLG	G12-55A (Prior to S/N 0160038538)	2910981
JLG	G12-55A (S/N 0160038538 to Present)	1001119798
JLG	G6-42P	2910982
JLG	TF6-42	2910993
Gradall	534C-9/534C-10	2910987
Gradall	522D/524D (2-Section Boom)	2910990
Gradall	534D-9 40 ft Boom (Prior to S/N 0644118)/534D-10 40 ft Boom (Prior to S/N 0366088)	2910991
Gradall	534D-9 45 ft Boom (S/N 0644119 thru S/N 0744407 & S/N 0160000112 to Present)	2910992
Gradall	534D-10 45 ft Boom (S/N 0366089 thru S/N 0366533 & S/N 0160000125 to Present)	2910992
Gradall	544D	2910985
Lull	6K-42/644B-42/8K-42/844C-42/10K-42/1044C-42	2911003
Lull	644D-34	2911007
Lull	944E-42	2911001
Lull	10K-54/1044C-54 (Prior to S/N 0160037900 except S/N 0160037855)	2911004
Lull	1044C-54 (S/N 0160037900 to Present including S/N 0160037855)	1001119781
SkyTrak	6036 Pre-Legacy	2910997
SkyTrak	8042 Pre-Legacy/10042 Pre-Legacy	2910998
SkyTrak	10054 Pre-Legacy	2910999
SkyTrak	6036 Legacy	2910994
SkyTrak	6042	1001119783
SkyTrak	8042 Legacy/10042 Legacy	2910995
SkyTrak	10054 Legacy	2910996

Telehandler Cab Enclosure Kits

Get ready for cold and rainy days by ordering a Cab Enclosure Kit for your telehandler. All kits are factory-approved and specifically designed to help you upgrade your open cab.

Features/Benefits


- Factory-approved kits
- Help protect the interior of your cab
- Allow the operator to work in comfort
- All necessary installation materials included
- Weather-resilient components
- Each kit comes with complete heater assembly



Machine Brand	Machine Model	Serial Number Break	Kit Part Number
JLG	TF6-42/G6-42A w/Perkins or John Deere	All	1001128816
JLG	G9-43A/G10-43A w/Perkins or John Deere	All	1001128816
JLG	G10-55A/ G12-55A w/Perkins or John Deere	All - Will Not Fit AccuPlace	1001120403
Lull	644B-37/644B-42	All	1001120404
Lull	844C-42	All	1001120404
Lull	1044C-42/1044C-54	All	1001120404
Lull	6K-37/6K-42	All	1001120404
Lull	8K-42/10K-42/10K-54	All	1001120404
Lull	644D	All	1001120404
Lull	644E/944E	All	7151295S
SkyTrak	6036 Legacy/6042 Legacy	All	1001120405
SkyTrak	8042 Legacy	All	1001120405
SkyTrak	10042 Legacy/10054 Legacy	All	1001120405
Gradall	522C/524C	S/N 0177005 to S/N 0177121	91085050
Gradall	522C/524C	S/N 0177122 to S/N 0277367	91145050
Gradall	522C/524C	S/N 0277368 to Present	91145096
Gradall	532C-6/534C-6	S/N 0288777 to S/N 0488237	91085050
Gradall	532C-6/534C-6	S/N 0488238 to Present	91145096
Gradall	534C-9/534C-10	S/N 0344001 to S/N 0444002 & S/N 0266001 to S/N 0266106	91145050
Gradall	534C-9/534C-10	S/N 0444003 to Present & S/N 0266107 to Present	91145096
Gradall	544C	S/N 0255001 to Present	91165050
Gradall	522D/524D	S/N 0277001 to Present	91345003
Gradall	522D/524D Lo-Pro	S/N 0191001 to Present	91483036S
Gradall	534D-6 /534D-6T	S/N 0588001 to Present	91345003
Gradall	534D-9	S/N 0544001 to S/N 0160000853, excluding S/N 0160000700	91345003
Gradall	534D-9	S/N 0160001051 to S/N 0160012394, including S/N 0160000700, excluding S/N 0160012112	91535014
Gradall	534D-9	S/N 0160012443 to Present, including S/N 0160012112	0274497S
Gradall	534D-10	S/N 0366001 to S/N 0160000974	91345003
Gradall	534D-10	S/N 0160000978 to S/N 0160012392, excluding S/N 0160012289	91535014
Gradall	534D-10	S/N 0160012392 to Present, including S/N 0160012289	0274497S
Gradall	544D	S/N 0355001 to S/N 0160000973	91345003
Gradall	544D	S/N 0160000976 to S/N 0160012366, excluding S/N 0160012289	91535014
Gradall	544D	S/N 0160012437 to Present, including S/N 0160012298	0274497S
Gradall	G6-42P	S/N 0189001 to Present	1001128817

NOTE: Please see Online Express or call the Parts Marketing Dept to see if your machine can be fitted with a cab enclosure kit.



 Heater assembly sold separately

Vinyl Cab Enclosure Kits

Stay comfortable and on schedule with a factory authorized Vinyl Enclosure Kit and heater assembly from JLG. The Vinyl Enclosure Kits will offer you an extra layer of protection from wet, cold and windy weather. These kits are easily installed, no tools required.

Features/Benefits

- 1-year limited warranty
- Glass windshield and skylight
- Quick installation
- Help protect the interior of your cab
- Allow the operator to work in comfort
- Designed for each individual model
- Heater option available

Vinyl Cab Enclosure Kits

Machine Model	Machine Model	Heater Kit Part Number	Vinyl Cab Kit
JLG	G6-42A/G9-43A/TF6-42 w/Perkins or John Deere	100128814	70010041
JLG	G10-55A/G12-55A w/Perkins or John Deere	100120402	70010041
JLG	Rear Pivot Steer Model G6-42P	100128814	70010041
JLG/Gradall	Rear Pivot Steer Models 534D9 (S/N 0160012443 to Present)/ 534D10 (S/N 0160012446 to Present)/ 544D10 (S/N 0160012437 to Present)	91365017	70010059
Lull	644E-42/944E-42	73014725	7151276
Lull	1044C-54/1044C-54 Series II	Refer to Parts Manual	70010361
SkyTrak	6036/6042/8042/10042/10054 Legacy Models	7148100	7139250

NOTE: *Due to serial number breaks, please refer to the Parts Manual for proper part numbers.

**Always remove vinyl components of the kit(s) during transport of machine.

Fall Arrest Platform Kits

When your work requires that you exit the platform, JLG helps keep you safe and mobile with our Fall Arrest Platforms. These platforms use a cable system that allows the operator to leave the platform and move freely without detaching the safety harness. This helps keep the operator tethered to the platform at all times.

Features/Benefits

- Available for a variety of boom lift applications, including aviation and steel erection
- Full 270° access around and 6 ft beyond the platform
- Allow workers to walk outside the platform
- Enhance operator protection



Machine Model	Platform Options and Kit Part Number	Tire Requirements	Accessory Counterweight	Prohibited Options
400S/460SJ (S/N 0300146621 to Present)	10011445975 (ANSI & CSA Spec) (36" x 72")	Foam-Filled or Solid		Tube Rack, Container Storage Tray, SkyGlazier, Cable Tray Carrier
E/M450A (S/N 0300109442 to Present)	10011445975 (ANSI & CSA Spec) (36" x 72") 1001145985 (ANSI & CSP Spec) (30" x 60")	Foam-Filled or Solid		1/2" Airline, Platform Worklights, Pipe Racks, Mesh to Top Rail
E/M450AJ (S/N 0300109442 to Present)	10011445985 (ANSI & CSA Spec) (30" x 60")	Foam-Filled or Solid		1/2" Airline, Platform Worklights, Pipe Racks, Mesh to Top Rail
E600/M600 (S/N 0300188650 to Present) E600J, M600J (S/N 0300097060 to Present)	10011445975 (ANSI, ANSI Export, CSA, Japan & UL EE Spec) (36" x 72") 10011445985 (ANSI Export Spec) (30" x 60")	Foam-Filled		Mesh to Mid Rail, Mesh to Top Rail, Platform Top Rail Ext, Weld Leads, SkyGlazier, Pipe Racks
450A Series II (USA Built - S/N 0300088741 to Present) 6 ft - S/N 0300088741 to Present 5 ft - S/N 0300182240 to Present)	10011445975 (ANSI & CSA Spec) (36" x 72") 10011445985 (ANSI & CSA Spec) (30" x 60")	Foam-Filled (12 x 16.5 or 33/15.50 x 16.5" only)		Platform Top Rail Ext, SkyGlazier, Pipe Racks, Mesh to Top Rail, Container Storage Tray, SkyCutter
450AJ Series II (USA Built - S/N 0300138555 to Present)	10011445985 (ANSI & CSA Spec) (30" x 60")	Foam-Filled (12 x 16.5 or 33/15.50 x 16.5" only)		Platform Top Rail Ext, SkyGlazier, Pipe Racks, Mesh to Top Rail, Container Storage Tray, SkyCutter
600A, 600AJ (8 ft Chassis Machines Only) (6 ft - S/N 0300128330 to Present) (8 ft - S/N 0300080181 to Present)	10011445975 (ANSI, ANSI Export, CSA & Japanese Spec) (36" x 72") 10011445965 (ANSI, ANSI Export & CSA Spec) (36" x 96")			Mesh to Mid Rail, Mesh to Top Rail, Platform Top Rail Ext, Rail Mounted Storage Tray, SkyGlazier, Pipe Racks and SkyCutter/SkyWelder Combo
600S, 600SJ, 660SJ (6 ft - S/N 0300125318 to Present) (8 ft - S/N 0300080179 to Present)	10011445975 (ANSI, ANSI Export, CSA & Japanese Spec) (36" x 72") 10011445965 (ANSI & ANSI Export Spec) (36" x 96")			Mesh to Mid Rail, Mesh to Top Rail, Platform Top Rail Ext, Rail Mounted Storage Tray, SkyGlazier, Pipe Racks and SkyCutter/SkyWelder Combo
740AJ**	10011445975 (ANSI & CSA Spec) (36" x 72")	Foam-Filled		Mesh to Top Rail, Platform Top Rail Ext, Rail Mounted Storage Tray, SkyGlazier, Pipe Racks, SkyCutter/SkyWelder Combo
800A, 800AJ (6 ft - S/N 0300128364 to Present) (8 ft - S/N 0300080176 to Present)	10011445975 (ANSI, ANSI Export & CSA Spec) (36" x 72") 10011445965 (ANSI, ANSI Export, CSA & CE Spec) (36" x 96")			Mesh to Top Rail, Platform Top Rail Ext, Rail Mounted Storage Tray, SkyGlazier, Pipe Racks, SkyCutter/SkyWelder Combo
800S, 860SJ (6 ft - S/N 0300128362 to S/N 0300162810) (8 ft - S/N 0300080174 to S/N 0300162810)	10011445975 (ANSI Spec) (36" x 72") 10011445965 (ANSI Spec) (36" x 96")	Foam-Filled (15-625 or 18-625)		Platform Flood Lights, Mesh to Top Rail (36" x 72"), Platform Top Rail Ext, Rail Mounted Storage Tray, SkyGlazier, Pipe Racks, SkyCutter/SkyWelder Combo

NOTES:

- Purchase and installation of platform does not guarantee compliance with all federal, state and/or local statutes. It is the responsibility of the customer to verify any and all applicable laws that may pertain to their equipment.
- The operator must use fall protection at all times. A full body harness and shock absorbing lanyard, not to exceed 6 ft in length, are required when using the external fall arrest system.
- The capacity of the External Fall System is 310 lb/one person maximum.
- Machines with Fall Arrest only. Machines with Soft Touch Fall Arrest have additional counter weighting and tire requirements and may have other additional requirements and prohibited options. Please consult JLG® Parts Department for compatibility prior to purchase.

Additional notes for specific machines:

** Standard Equipment with Fall Arrest Platform.

***** Counter weight required, unless machine was factory equipped with Fall Arrest Platform.



Fall Arrest Platform Kits (cont.)

Machine Model	Platform Options and Kit Part Number	Tire Requirements	Accessory Counterweight	Prohibited Options
800S, 860SJ (6 ft - S/N 0300128362 to S/N 0300162810) (8 ft - S/N 0300080174 to S/N 0300162810)	1001144597S (ANSI Spec) (36" x 72") 1001144596S (ANSI Spec) (36" x 96")	Foam-Filled (15-625 or 18-625)		Platform Flood Lights, Mesh to Top Rail (36" x 72"), Platform Top Rail Ext, Rail Mounted Storage Tray, SkyGlazier, Pipe Racks, SkyCutter/SkyWelder Combo
800S, 860SJ (6 ft - S/N 0300162810 to S/N 0300182743) (8 ft - S/N 0300162810 to S/N 0300182743)	1001144597S (ANSI Spec) (36" x 72") 1001144596S (ANSI Spec) (36" x 96")	Consult JLG Parts Department for Comatability Prior to Purchase		
800S, 860SJ (6 ft - S/N 0300182743 to Present) (8 ft - S/N 0300182743 to Present)	1001144597S (ANSI Spec) (36" x 72") 1001144596S (ANSI Spec) (36" x 96")	Foam-Filled (15-625 only)	Required P/N 1001165646 *****	Platform Flood Lights, Mesh to Top Rail (36" x 72"), Platform Top Rail Ext, Rail Mounted Storage Tray, SkyGlazier, Pipe Racks, SkyCutter/SkyWelder Combo
810SJ	1001144596S (ANSI Spec only) (36" x 96")	Foam-Filled (15-625 only)		
1100SB**	1001144596S (ANSI Spec only) (36" x 96")	Foam-Filled or Solid	Required P/N 0272078 *****	
1200/1350SJP* (ANSI Export Spec - S/N 03000147130 to Present) (ANSI Spec - S/N 0300080177 to Present) (Aus Spec - S/N 0300085906 to Present)	101144597S (ANSI & ANSI Export Spec) (36" x 72") 1001144596S (ANSI Spec) (36" x 96") 1001175535 (Aus Spec) (36" x 96")	Foam-Filled or Solid	Required P/N 0272078 *****	Platform Flood Lights, Mesh to Mid Rail, Mesh to Top Rail, Platform Top Rail Ext, Rail Mounted Storage Tray, SkyGlazier, Pipe Racks, SkyCutter/SkyWelder Combo, Cable Tray Carrier
1250AJP* (6 ft - S/N 0300138710 to Present) (8 ft - S/N 0300136710 to Present)	1001144597S (ANSI & ANSI Export Spec) (36" x 72") 1001144596S (ANSI & CSA Spec) (36" x 96")	Foam-Filled or Solid		Pipe Racks, Mesh to Mid Rail, Mesh to Top Rail, Platform Top Rail Ext, Rail Mounted Storage Tray, SkyGlazier, SkyCutter/SkyWelder Combo
1500SJ*	1001175535 (CE & Aus Spec) (36" x 72") 1001144596S (ANSI Spec) (36" x 96")	Foam-Filled or Solid	Required P/N 0272078 *****	Pipe Racks, Mesh to Mid Rail, Mesh to Top Rail, Platform Top Rail Ext, Rail Mounted Storage Tray, SkyGlazier, Platform Flood Lights, SkyCutter/SkyWelder Combo, Cable Tray Carrier
1850SJ*	1001144596S (ANSI Spec) (36" x 96") 1001175535 (Aus Spec) (36" x 96")	Foam-Filled	Required	Pipe Racks, Mesh to Mid Rail, Mesh to Top Rail, Platform Top Rail Ext, Rail Mounted Storage Tray, SkyCutter/SkyWelder Combo, SkyGlazier, Platform Flood Lights

NOTES:

- Purchase and installation of platform does not guarantee compliance with all federal, state and/or local statues. It is the responsibility of the customer to verify any and all applicable laws that may pertain to their equipment.
- The operator must use fall protection at all times. A full body harness and shock absorbing lanyard, not to exceed 6 ft in length, are required when using the external fall arrest system.
- The capacity of the External Fall System is 310 lb/one person maximum.
- Machines with Fall Arrest only. Machines with Soft Touch Fall Arrest have additional counter weighting and tire requirements and may have other additional requirements and prohibited options. Please consult JLG® Parts Department for compatibility prior to purchase.

Additional notes for specific machines:

- * Requires Machine Recalibration.
- ** Standard Equipment with Fall Arrest Platform.
- *** 1250AJP Soft Touch - Prohibited on 8 ft Fall Arrest, Prohibited on 6 ft Fall Arrest Prior to S/N 0300138710.

Platform Soft Touch Kits

Protect your machine and surroundings with the JLG® Soft Touch Kit. JLG's Soft Touch System mounts a padding kit to the platform guardrails and to a frame suspended below the platform. If the padded framework comes in contact with an adjacent structure, proximity sensors will deactivate platform functions, for increased protection for the machine and its surroundings. For convenience, an override button permits "undoing."

Features/Benefits

- Increase the protection of the machine and its surroundings
- Designed for use near delicate areas
- Help increase the versatility of your machine
- Kits include instructions and all required components to install the Soft Touch to existing machines (applicable models only)



Machine Model	Platform Size	Serial Number Breaks	Kit Part Number
400S/460SJ	36 in. x 72 in.	0300069669 to Present	1001121592
400S/460SJ	36 in. x 96 in.	0300069669 to Present	1001121593
600A, 600AJ	36 in. x 72 in.	0300067890 to Present	1001121592
600A, 600AJ	36 in. x 96 in.	0300067890 to Present	1001121593
600S, 600SJ, 660SJ	36 in. x 72 in.	0300067763 to Present	1001121592
600S, 600SJ, 660SJ	36 in. x 96 in.	0300067763 to Present	1001121593

NOTES:

- Kits designed to fit ANSI spec machines only. For all other specs contact JLG® Parts Call Center.
- If machine is equipped with a Fall Arrest Platform, contact JLG Parts Department prior to ordering.
- The information on this document supersedes all information on any "Platform Soft Touch Kits" document(s) published prior to the date of this document.

SkyGuard™ Installation Kits

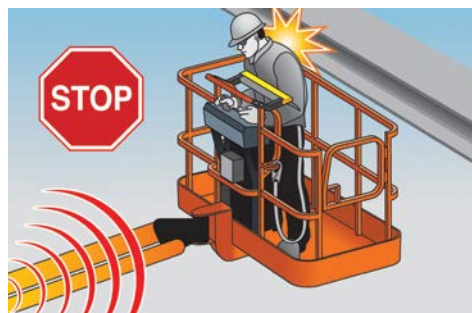
SkyGuard™ provides the operator and control panel with enhanced protection that doesn't limit platform workspace or visibility. When the sensor is activated by approximately 50 lbs of force or more, SkyGuard stops all functions in use at the time and its unique reverse functionality—the first feature of its kind in the market—temporarily reverses most functions for a short period of time. SkyGuard is available exclusively from JLG. Check out the SkyGuard video at <http://www.jlg.com/en/destination/skyguard>.

Features/Benefits

- Can be activated from a variety of angles
 - Sensor bar break-away feature for extreme conditions
 - Temporarily reverses most, but not all, functions that were in use at the time of activation for less than a second's worth of time
 - Does not limit platform workspace or operator visibility
 - No moveable parts means there's no need for scheduled or additional maintenance
 - A horn and optional blue flashing beacon (sold separately) alert other workers on the job site to sensor activation
 - Resets by cycling foot switch or e-stop
 - Kit includes all required components, hardware and instructions
 - Can be installed on most combustion-powered JLG boom lifts manufactured in 2004 and later
 - Also available on E-booms
 - Not available on new platforms (*kit coming soon).
- If unsure, please contact the Parts Dept to confirm which platform you have.



Operator moves toward obstruction.



Horn sounds upon operator contact with the bar.



The auto reverse feature activates for most functions.

Refer to the following page for detailed application information.

SkyGuard™ Installation Kits (cont.)

1. Identify which ground control module your machine is equipped with by using the photographs below (UGM - Universal Ground Module).
2. Refer to the chart on the next page to determine which kit is applicable to your machine.



Non-UGM Ground Control Module



UGM Ground Control Module

Machine Model	Kit Type	Application	Kit Part Number
E300A/AJ/AJP E/M400/450A/AJP E/M600/J/JP	Complete	All with UGM	1001149561
E300A/AJ/AJP E/M400/450A/AJP E/M600/J/JP	Platform Only	All with UGM	1001149563
400S/ 460AJ	Complete	S/N 0300077555 to S/N 0300160835 without UGM S/N 1300000353 to Present without UGM	1001149560
400S/ 460AJ	Complete	S/N 0300077555 to S/N 0300160835 with UGM S/N 1300000353 to Present with UGM S/N E300000100 to S/N E300001114 with UGM	1001143669
400S/ 460AJ	Platform Only	All with UGM	1001137672
450A/AJ Series II	Complete	S/N 0300077555 to Present S/N 1300000353 to Present without UGM	1001149560
450A/AJ Series II	Complete	All with UGM	1001143669
450A/AJ Series II	Platform Only	All with UGM	1001137672
510AJ	Complete	S/N 1300000353 to Present without UGM	1001149560
510AJ	Complete	All with UGM	1001143669
510AJ	Platform Only	All with UGM	1001137672
600A/AJ	Complete	S/N 0300077490 to Present without UGM	1001149560
600A/AJ	Complete	All with UGM	1001143669
600A/AJ	Platform Only	All with UGM	1001137672
600S/SJ/660SJ	Complete	S/N 0300077490 to Present without UGM	1001149560
600S/SJ/660SJ	Complete	All with UGM	1001143669
600S/SJ/660SJ	Platform Only	All with UGM	1001137672
600SC/SJC/660SJC	Complete	Gradall Chassis ONLY Prior to S/N 0300128000 without UGM	1001149560
600SC/SJC/660SJC	Complete	S/N 0300128000 to Present without UGM	1001149560
600SC/SJC/660SJC	Complete	All with UGM	1001143669
600SC/SJC/660SJC	Platform Only	All with UGM	1001137672
680S	Complete	All without UGM	1001149560
680S	Complete	All with UGM	1001143669
680S	Platform Only	All with UGM	1001137672
740AJ	Complete	S/N 0300077500 to Present without UGM	1001149560
740AJ	Complete	All with UGM	1001143669
740AJ	Platform Only	All with UGM	1001137672

SkyGuard™ Installation Kits (cont.)

Machine Model	Kit Type	Application	Kit Part Number
800A/AJ	Complete	S/N 0300077251 to Present without UGM	1001149560
800A/AJ	Complete	All with UGM	1001143669
800A/AJ	Platform Only	All with UGM	1001137672
800S/860SJ	Complete	All with UGM	1001143669
800S/860SJ	Platform Only	All with UGM	1001137672
1100S/SJP/1100SB	Complete	All	101143669
1100S/SJP/1100SB	Platform Only	All	1001137672
1200SJP/1350SJP	Complete	All without UGM	1001173352
1200SJP/1350SJP	Complete	All with UGM	1001143669
1200SJP/1350SJP	Platform Only	All with UGM	1001137672
1250AJP	Complete	All without UGM	1001155077
1250AJP	Complete	All with UGM	1001143669
1250AJP	Platform Only	All with UGM	1001137672
1500SJ	Complete	All	1001143669
1500SJ	Platform Only	All	1001137672

Machine Model	Kit Part Number
340AJ	1001149752
E300A/300AJ/300AJ, 3/M400/450A/AJP and E/M600J/JJ	1001149564
1200SJP, 1350SJP and 1250AJP	1001155079
400S/460SJ, 450A/AJ Series II, 510AJ, 600A/AJ, 600S/SJ/660SJ, 600SC/SJC/660SJC, 680S, 740AJ, 800A/AJ, 8002/860SJ, 1100S/SJP, 1100SB, 1500SJ	101143256

NOTE:

- Complete kit for machines without Universal Ground Module contains Platform Sensor Installation, Optional Blue Beacon and UGM Conversion.
- Complete kit for machines with Universal Ground Module contains Platform Sensor Installation and Optional Blue Beacon.
- Kits cannot be used in conjunction with any type of platform console cover.
- SkyGuard is not available on the 150HAX.
- To facilitate installation of an existing SkyGuard product on a new platform, customers will need to purchase the SkyGuard Replacement Kit separately (P/N 1001199928).

Telehandler Fender Kits

Kits include all required parts to install four fenders on your telehandler. Fenders help to protect your investment while reducing the debris thrown into the air from tire rotation.

Features/Benefits

- Kit includes everything required to install four fenders
- Help protect your investment
- Keep your telehandler clean
- Requires one kit per machine



Machine Brand	Machine Model	Serial Number Break	Kit Part Number
JLG	G6-42A	S/N 0160000847 to Present	91475103S
JLG	G9-43A / G10-43A	All	91515071S
JLG	G10-55A / G12-55A	All	91565081S
Lull	644E-42	All	7301311S
Lull	944E-42 w/o Solid Tires	All	7301311S
Lull	944E-42 with Solid Tires	All	1001109604S
SkyTrak	6036 / 6042	All	7147400
SkyTrak	8042	Prior to S/N 0160038967	7147400
SkyTrak	8042	S/N 0160038967 to Present	7147500
SkyTrak	10042 / 10054	All	7147500

NOTE: The information contained in this document supersedes and replaces the contents of any Telehandler Fender Kit Flyer(s) issued prior to the issue date of this document.



Speed Limiting Shifter Kits

Due to the increasing amount of job sites with speed restrictions, JLG has developed a speed limiting shifter kit. This kit eliminates the option of fourth gear for the operator. The kit can also be transferred from machine to machine.

Features/Benefits

- Available for different telehandler models
- Disables operator use of fourth gear
- Kits include instructions and all required hardware
- Designed for use in areas with speed restrictions

Machine Brand	Machine Model	Transmission	Kit Part Number
JLG	G6-42A	Dana Transmission	1001116483
JLG	G9-43A/G10-43A	Dana Transmission	1001116483
JLG	G6-42A	ZF Transmission	1001116481
JLG	G9-43A/G10-43A	ZF Transmission	1001116481
JLG	G10-55A/G12-55A	ZF Transmission	1001116481
Lull	644E-42	ZF Transmission	1001116480
Lull	944E-42	ZF Transmission	1001116480
SkyTrak	8042	ZF Transmission	1001116482
SkyTrak	10042	ZF Transmission	1001116482
SkyTrak	10054	ZF Transmission	1001116482

JLG® Telehandler Filter Kits

Filtration is critical for your hydraulic and oil systems. That is why it is so important that you replace your filters with factory-approved filters and filter kits. Proper maintenance of your equipment increases productivity and helps maintain the life span of your equipment. These kits help guarantee that you have the correct filters.



Features/Benefits

- All filters included under one convenient part number
- Available in two different maintenance intervals
- Model and serial number specific
- Kits include factory-approved filters
- Help maintain and protect your investment

Note: ULS=Ultra-Low Sulfur ; LS=Low Sulfur.

Machine Model	Hour Interval	Kit Part Number	Serial Number Break
619A	250 HOUR KITS	1001128956	Deutz Engine
	1000 HOUR KITS	1001128955	Deutz Engine
723A	250 HOUR KITS	1001128956	Deutz Engine
	1000 HOUR KITS	1001128955	Deutz Engine
TF6-42	250 HOUR KITS	91415035	w/ John Deere - S/N 0192001 to S/N 0192007 & S/N 0160000052 to S/N 0160002686
		91415084	w/ John Deere - S/N 0160003136 to Present
	1000 HOUR KITS	1001128964	w/ John Deere - S/N 0192001 to S/N 0192007 & S/N 0160000052 to S/N 0160002686
		2915175	w/ John Deere - S/N 0160003136 to Present
G5-18A	500 HOUR KITS	1001110116	w/ Perkins - S/N 0160032850 to S/N 0160052999 except S/N 0160051045, 0160051047, 0160051049, 01600511194 & 0160051359
		1001161228	w/ Deutz ULS Fuel Engine - S/N 0160053000 to Present including S/N 0160051045, 0160051047, 0160051049, 01600511194 & 0160051359
	1000 HOUR KITS	1001161229	w/ Deutz LS Fuel Engine - S/N 0160053000 to Present including S/N 0160051045, 0160051047, 0160051049, 01600511194 & 0160051359
		1001110120	w/ Perkins - S/N 0160032850 to S/N 0160052999 except S/N 0160051045, 0160051047, 0160051049, 01600511194 & 0160051359
G5-19A	250 HOUR KITS	1001091764	Deutz Engine
	1500 HOUR KITS	1001091765	Deutz Engine
G6-23A	250 HOUR KITS	1001091764	Deutz Engine
	1500 HOUR KITS	1001091765	Deutz Engine
G6-42A	250 HOUR KITS	91405102	w/ John Deere - S/N 0190001 to S/N 0190457 & S/N 0160000022 to S/N 0160001891
		91415035	w/ John Deere - S/N 0160001893 to S/N 0160003126
		91415084	w/ John Deere - S/N 0160003208 to S/N 0160040659
		1001001532	w/ Perkins - S/N 0160021195 to S/N 0160040659
		1001133662	w/ Cummins - S/N 0160040678 to S/N 0160048658
		1001158567	w/ Cummins ULS Fuel Engine - S/N 0160048658 to Present
	1000 HOUR KITS	1001158564	w/ Cummins LS Fuel Engine - S/N 0160048658 to Present
		1001128957	w/ John Deere - S/N 0190001 to S/N 0190457 & S/N 0160000022 to S/N 0160001891
		1001128964	w/ John Deere - S/N 0160001893 to S/N 0160003126
		2915175	w/ John Deere - S/N 0160003208 to S/N 0160040659
		100111852	w/ Perkins - S/N 0160021195 to S/N 0160040659
		1001133663	w/ Cummins - S/N 0160040678 to S/N 0160048658
1001158568	w/ Cummins ULS Fuel Engine - S/N 0160048658 to Present		
1001158565	w/ Cummins LS Fuel Engine - S/N 0160048658 to Present		

JLG® Telehandler Filter Kits (cont.)

Machine Model	Hour Interval	Kit Part Number	Serial Number Break		
G9-43A	250 HOUR KITS	91415064	w/ John Deere - S/N 0193001 to S/N 0193007 & S/N 016000008 to S/N 0160003121 except S/N 0160002658		
		91415084	w/ John Deere - S/N 0160003210 to S/N 0160040674 including S/N 0160002658 except S/N 0160040468 & 0160040672		
		1001001532	w/ Perkins - S/N 0160020943 to S/N 0160040674 including S/N 0160020803, 0160020823 & 0160020824 except S/N 0160040468 & 0160040672		
		1001133662	w/ Cummins - S/N 0160040675 to S/N 0160048671 including S/N 0160040468, 0160040672 & 0160048773		
		1001158567	w/ Cummins ULS Fuel Engine - S/N 0160048671 to Present except S/N 0160048773		
		1001158564	w/ Cummins LS Fuel Engine - S/N 0160048671 to Present except S/N 0160048773		
	1000 HOUR KITS	1001128960	w/ John Deere - S/N 0193001 to S/N 0193007 & S/N 016000008 to S/N 0160003121 except S/N 0160002658		
		2915176	w/ John Deere - S/N 0160003210 to S/N 0160040674 including S/N 0160002658 except S/N 0160040468 & 0160040672		
		100113602	w/ Perkins - S/N 0160020943 to S/N 0160040674 including S/N 0160020803, 0160020823 & 0160020824 except S/N 0160040468 & 0160040672		
		1001133663	w/ Cummins - S/N 0160040675 to S/N 0160048671 including S/N 0160040468, 0160040672 & 0160048773		
		1001158568	w/ Cummins ULS Fuel Engine - S/N 0160048671 to Present except S/N 0160048773		
		1001158565	w/ Cummins LS Fuel Engine - S/N 0160048671 to Present except S/N 0160048773		
		G10-43A	250 HOUR KITS	91415084	w/ John Deere - S/N 0160038081 to S/N 0160040674
				1001133662	w/ Cummins - S/N 0160040675 to S/N 0160048671
1001158567	w/ Cummins ULS Fuel Engine - S/N 0160048671 to Present				
1001158564	w/ Cummins LS Fuel Engine - S/N 0160048671 to Present				
1000 HOUR KITS	2915176		w/ John Deere - S/N 0160038081 to S/N 0160040674		
	1001133663		w/ Cummins - S/N 0160040675 to S/N 0160048671		
	1001158568		w/ Cummins ULS Fuel Engine - S/N 0160048671 to Present		
	1001158565		w/ Cummins LS Fuel Engine - S/N 0160048671 to Present		
	G10-55A w/o Accuplace		250 HOUR KITS	91535011	w/ John Deere - S/N 0160002031 to S/N 0160039450
				1001111853	w/ Perkins - S/N 0160032082 to S/N 0160039450
1001128963		w/ Cummins - S/N 0160039451 to S/N 0160045636 except S/N 0160045082 & 0160045295			
1001150521		w/ Cummins ULS Fuel Engine - S/N 0160045636 to Present including S/N 0160045082 & 0160045295			
1001150519		w/ Cummins LS Fuel Engine - S/N 0160045636 to Present including S/N 0160045082 & 0160045295			
1000 HOUR KITS		2915177	w/ John Deere - S/N 0160002031 to S/N 0160039450		
		1001111854	w/ Perkins - S/N 0160032082 to S/N 0160039450		
		1001128962	w/ Cummins - S/N 0160039451 to S/N 0160045636 except S/N 0160045082 & 0160045295		
		1001150522	w/ Cummins ULS Fuel Engine - S/N 0160045636 to Present including S/N 0160045082 & 0160045295		
		1001150520	w/ Cummins LS Fuel Engine - S/N 0160045636 to Present including S/N 0160045082 & 0160045295		
G12-55A w/o Accuplace	250 HOUR KITS	91565090	w/ John Deere - S/N 0160002031 to S/N 0160039450		
		1001111855	w/ Perkins - S/N 0160032082 to S/N 0160039450		
		1001128963	w/ Cummins - S/N 0160039451 to S/N 0160045636 except S/N 0160045094, 0160045209, 0160045296 & 0160045449		
		1001150521	w/ Cummins ULS Fuel Engine - S/N 0160045636 to Present including S/N 0160045094, 0160045209, 0160045296 & 0160045449		
		1001150519	w/ Cummins LS Fuel Engine - S/N 0160045636 to Present including S/N 0160045094, 0160045209, 0160045296 & 0160045449		
	1000 HOUR KITS	2915178	w/ John Deere - S/N 0160002031 to S/N 0160039450		
		1001111856	w/ Perkins - S/N 0160032082 to S/N 0160039450		
		1001128962	w/ Cummins - S/N 0160039451 to S/N 0160045636 except S/N 0160045094, 0160045209, 0160045296 & 0160045449		
		1001150522	w/ Cummins ULS Fuel Engine - S/N 0160045636 to Present including S/N 0160045094, 0160045209, 0160045296 & 0160045449		
		1001150520	w/ Cummins LS Fuel Engine - S/N 0160045636 to Present including S/N 0160045094, 0160045209, 0160045296 & 0160045449		
G10-55A w/ Accuplace	250 HOUR KITS	1001111853	Perkins Engine		
	1000 HOUR KITS	1001111854	Perkins Engine		
G12-55A w/ Accuplace	250 HOUR KITS	1001111855	Perkins Engine		
	1000 HOUR KITS	1001111856	Perkins Engine		
1055/1255	250 HOUR KITS	101199739	All		
	1000 HOUR KITS	101199740	All		

SkyTrak® Telehandler Filter Kits

Filtration is critical for your hydraulic and oil systems. That is why it is so important that you replace your filters with factory-approved filters and filter kits. Proper maintenance of your equipment increases productivity and helps maintain the life span of your equipment. These kits help guarantee that you have the correct filters.

Features/Benefits

- All filters included under one convenient part number
- Available in two different maintenance intervals
- Model and serial number specific
- Kits include factory-approved filters
- Help maintain and protect your investment



Note: ULS=Ultra-Low Sulfur ; LS=Low Sulfur.

Machine Model	Hour Interval	Kits Part Number	Serial Number Break
6036 Pre-Legacy	250 Hour Kits	7138287	w/ Perkins 4.236 Naturally Aspirated Engine
		1001128953	w/ Perkins 4.236 Turbo Engine
		7138289	w/ Cummins 4BT3.9 Naturally Aspirated Engine
		7138291	w/ Cummins 4BT3.9 Turbo Engine - S/N 3616 & Before
	1000 Hour Kits	7138290	w/ Cummins 4BT3.9 Turbo Engine - S/N 3617 to S/N 14833
		7138293	w/ Perkins 4.236 Naturally Aspirated Engine
		7138294	w/ Perkins 4.236 Turbo Engine
		7138295	w/ Cummins 4BT3.9 Naturally Aspirated Engine
8042 Pre-Legacy	250 Hour Kits	7138301	w/ Cummins 4BT3.9 Turbo Engine - S/N 3616 & Before
		7138297	w/ Cummins 4BT3.9 Turbo Engine - S/N 3617 to S/N 14833
	1000 Hour Kits	7138291	w/ Cummins 4BT3.9 Turbo Engine - S/N 1605 & Before
		7138290	w/ Cummins 4BT3.9 Turbo Engine - S/N 1606 to S/N 13197
		7138301	w/ Cummins 4BT3.9 Turbo Engine - S/N 1605 & Before
10042 Pre-Legacy	250 Hour Kits	7138297	w/ Cummins 4BT3.9 Turbo Engine - S/N 1606 to S/N 9908
		7138848	w/ Cummins 4BT3.9 Turbo Engine - S/N 9909 to S/N 13197
	1000 Hour Kits	7138291	w/ Cummins 4BT3.9 Turbo Engine - S/N 1603 & Before
		7138290	w/ Cummins 4BT3.9 Turbo Engine - S/N 1604 to S/N 13197
10054 Pre-Legacy	250 Hour Kits	7138301	w/ Cummins 4BT3.9 Turbo Engine - S/N 1603 & Before
		7138297	w/ Cummins 4BT3.9 Turbo Engine - S/N 1604 to S/N 9908
	1000 Hour Kits	7138848	w/ Cummins 4BT3.9 Turbo Engine - S/N 9909 to S/N 13197
		7138291	w/ Cummins 4BT3.9 Turbo Engine - S/N 1598 & Before
		7138290	w/ Cummins 4BT3.9 Turbo Engine - S/N 1599 to S/N 13197
6036 Legacy	250 Hour Kits	7138301	w/ Cummins 4BT3.9 Turbo Engine - S/N 1598 & Before
		7138297	w/ Cummins 4BT3.9 Turbo Engine - S/N 1599 to S/N 9908
		7138848	w/ Cummins 4BT3.9 Turbo Engine - S/N 9909 to S/N 13197
		1001128949	w/ Cummins - S/N 14834 to S/N 19983
		1001128951	w/ Cummins - S/N 19988 & S/N 0160002345 to S/N 0160004109
	1000 Hour Kits	2915034	w/ Cummins - S/N 0160004110 to S/N 0160039407
		1001128968	w/ Cummins - S/N 0160039408 to S/N 0160044900
		1001150523	w/ Cummins ULS Fuel Engine - S/N 0160045066 to S/N 0160069719 except S/N 0160065792 & 0160065824
		1001150516	w/ Cummins LS Fuel Engine - S/N 0160045066 to S/N 0160069719
		8024016	w/ Cummins - S/N 14834 to S/N 19983
6036	250 Hour Kits	1001128950	w/ Cummins - S/N 19988 & S/N 0160002345 to S/N 016004109
		2915036	w/ Cummins - S/N 0160004110 to S/N 0160039407
		1001128967	w/ Cummins - S/N 0160039408 to S/N 0160044900
		1001150526	w/ Cummins ULS Fuel Engine - S/N 0160045066 to S/N 0160069719 except S/N 0160065792 & 0160065824
		1001150525	w/ Cummins LS Fuel Engine - S/N 0160045066 to S/N 0160069719
6036	250 Hour Kits	1001199737	S/N 0160069720 to Present including S/N 0160065792 & 0160065824
	1000 Hour Kits	1001199738	S/N 0160069720 to Present including S/N 0160065792 & 0160065824

Machine Model	Hour Interval	Kits Part Number	Serial Number Break
6042 Legacy	250 Hour Kits	1001128949	w/ Cummins - S/N 17019 to S/N 19897
		1001128951	w/ Cummins - S/N 0160002408 to S/N 0160004110
		2915034	w/ Cummins - S/N 0160004111 to S/N 0160039407
		1001128968	w/ Cummins - S/N 0160039408 to S/N 0160045063 except S/N 0160042742, 0160042747 & 0160042755
		1001150523	w/ Cummins ULS Fuel Engine - S/N 0160045066 to S/N 0160069719 including S/N 0160042742, 0160042747, & 0160042755 except S/N 0160065798
	1000 Hour Kits	1001150516	w/ Cummins LS Fuel Engine - S/N 0160045066 to S/N 0160069719 including S/N 0160042742, 0160042747, & 0160042755
		8024016	w/ Cummins - S/N 17019 to S/N 19897
		1001128950	w/ Cummins - S/N 0160002408 to S/N 0160004110
		2915036	w/ Cummins - S/N 0160004111 to S/N 0160039407
		1001128967	w/ Cummins - S/N 0160039408 to S/N 0160045063 except S/N 0160042742, 0160042747 & 0160042755
6042	250 Hour Kits	1001199737	S/N 0160069720 to Present including S/N 0160065798
	1000 Hour Kits	1001199738	S/N 0160069720 to Present including S/N 0160065798
8042 Legacy	250 Hour Kits	7138290	w/ Cummins - S/N 13198 to S/N 18990
		8024049	w/ Cummins - S/N 18991 to S/N 19987 & S/N 0160002332 to S/N 0160029592
		100111849	w/ Cummins - S/N 0160029593 to S/N 0160040218
		1001128968	w/ Cummins - S/N 0160040220 to S/N 0160045250 including S/N 0160045255 except S/N 0160042754, 0160042762 & 0160043185
		1001150523	w/ Cummins ULS Fuel Engine - S/N 0160045250 to 0160069719 including S/N 0160042754, 0160042762 & 0160043185 except S/N 0160045255
	1000 Hour Kits	1001150516	w/ Cummins LS Fuel Engine - S/N 0160045250 to 0160069719 including S/N 0160042754, 0160042762 & 0160043185 except S/N 0160045255
		8024000	w/ Cummins - S/N 13198 to S/N 18990
		8024050	w/ Cummins - S/N 18991 to S/N 19987 & S/N 0160002332 to S/N 0160029592
		100111850	w/ Cummins - S/N 0160029593 to S/N 0160040218
		1001133665	w/ Cummins - S/N 0160040220 to S/N 0160045250 including S/N 0160045255 except S/N 0160042754, 0160042762 & 0160043185
8042	250 Hour Kits	1001199737	S/N 0160069722 & Above including S/N 0160065796 & 0160065825
	1000 Hour Kits	1001199738	S/N 0160069722 & Above including S/N 0160065796 & 0160065825
10042 Legacy	250 Hour Kits	7138290	w/ Cummins - S/N 13198 to S/N 19030
		8024049	w/ Cummins - S/N 19031 to S/N 19987 & S/N 0160002332 to S/N 0160029606
		100111849	w/ Cummins - S/N 0160029607 to S/N 0160040218 except S/N 0160040126 to S/N 0160040129
		1001128968	w/ Cummins - S/N 0160040220 to S/N 0160045250 including S/N 0160040126 to S/N 0160040129
		1001150523	w/ Cummins ULS Fuel Engine - S/N 0160045250 to S/N 0160069719
	1000 Hour Kits	1001150516	w/ Cummins LS Fuel Engine - S/N 0160045250 to S/N 0160069719
		8024000	w/ Cummins - S/N 13198 to S/N 19030
		8024050	w/ Cummins - S/N 19031 to S/N 19987 & S/N 0160002332 to S/N 0160029606
		100111850	w/ Cummins - S/N 0160029607 to S/N 0160040218 except S/N 0160040126 to S/N 0160040129
		1001133665	w/ Cummins - S/N 0160040220 to S/N 0160045250 including S/N 0160040126 to S/N 0160040129
10042	250 Hour Kits	1001199737	S/N 0160069722 & Above including S/N 0160065791
	1000 Hour Kits	1001199738	S/N 0160069722 & Above including S/N 0160065791
10054 Legacy	250 Hour Kits	7138290	w/ Cummins - S/N 13198 to S/N 19079
		8024049	w/ Cummins - S/N 19080 to S/N 19987 & S/N 0160002332 to S/N 0160029593
		100111849	w/ Cummins - S/N 0160029594 to S/N 0160040218 except S/N 0160039850 & 0160040171
		1001128968	w/ Cummins - S/N 0160040220 to S/N 0160045250 including S/N 0160039850 & 0160040171 except S/N 0160042877, 0160042911, 0160043220 & 0160043244
		1001150523	w/ Cummins ULS Fuel Engine - S/N 0160045250 to S/N 0160069721 including S/N 0160042877, 0160042911, 0160043220 & 0160043244
	1000 Hour Kits	1001150516	w/ Cummins LS Fuel Engine - S/N 0160045250 to S/N 0160069721 including S/N 0160042877, 0160042911, 0160043220 & 0160043244
		8024000	w/ Cummins - S/N 13198 to S/N 19079
		8024050	w/ Cummins - S/N 19080 to S/N 19987 & S/N 0160002332 to S/N 0160029593
		100111850	w/ Cummins - S/N 0160029594 to S/N 0160040218 except S/N 0160039850 & 0160040171
		1001133665	w/ Cummins - S/N 0160040220 to S/N 0160045250 including S/N 0160039850 & 0160040171 except S/N 0160042877, 0160042911, 0160043220 & 0160043244
10054	250 Hour Kits	1001199737	S/N 0160069722 & Above including S/N 0160065826
	1000 Hour Kits	1001199738	S/N 0160069722 & Above including S/N 0160065826

Gradall® Telehandler Filter Kits

Filtration is critical for your hydraulic and oil systems. That is why it is so important that you replace your filters with factory-approved filters and filter kits. Proper maintenance of your equipment increases productivity and helps maintain the life span of your equipment. These kits help guarantee that you have the correct filters.

Features/Benefits

- All filters included under one convenient part number
- Available in two different maintenance intervals
- Model and serial number specific
- Kits include factory-approved filters
- Help maintain and protect your investment



Machine Model	Hour Interval	Kit Part Number	Serial Number Break
534D-9	250 Hour Kit	91365008	w/ Cummins - S/N 0544001 to S/N 0544399
		91365042	w/ Cummins - S/N 0544400 to S/N 0744407 & S/N 0160000112 to S/N 0160000853 except S/N 0160000700
		91535011	w/ John Deere - S/N 0160001051 to Present including S/N 0160000700
		100113718	w/ Cummins - S/N 0160035983 to Present including S/N 0160034957
	1000 Hour Kit	1001128952	w/ Cummins - S/N 0544001 to S/N 0544399
		1001128961	w/ Cummins - S/N 0544400 to S/N 0744407 & S/N 0160000112 to S/N 0160000853 except S/N 0160000700
		2915180	w/ John Deere - S/N 0160001051 to Present including S/N 0160000700
		100113719	w/ Cummins - S/N 0160035983 to Present including S/N 0160034957
534D-10	250 Hour Kit	91365008	w/ Cummins - S/N 0366001 to S/N 0366342
		91365042	w/ Cummins - S/N 0366343 to S/N 066533 & S/N 0160000125 to S/N 0160000974
		91535011	w/ John Deere - S/N 0160000978 to Present
		100113718	w/ Cummins - S/N 0160035696 to Present
	1000 Hour Kit	1001128952	w/ Cummins - S/N 0366001 to S/N 0366342
		1001128961	w/ Cummins - S/N 0366343 to S/N 0366533 & S/N 0160000125 to S/N 0160000974
		2915180	w/ John Deere - S/N 0160000978 to Present
		100113719	w/ Cummins - S/N 0160035696 to Present
544D-10	250 Hour Kit	91365008	w/ Cummins - S/N 0355001 to S/N 0355579
		91365042	w/ Cummins - S/N 0355580 to S/N 0455362 & S/N 0160000192 to S/N 0160000973
		91535011	w/ John Deere - S/N 0160000976 to S/N S/N 0160034720 including S/N 0160035922
		100113718	w/ Cummins - S/N 0160035037 to Present except S/N 0160035922
	1000 Hour Kit	1001128952	w/ Cummins - S/N 0355001 to S/N 0355579
		1001128961	w/ Cummins - S/N 0355580 to S/N 0455362 & S/N 0160000192 to S/N 0160000973
		2915180	w/ John Deere - S/N 0160000976 to S/N S/N 0160034720 including S/N 0160035922
		100113719	w/ Cummins - S/N 0160035037 to Present except S/N 0160035922
G6-42P	250 Hour Kit	91405102	w/ John Deere - S/N 0189001 to S/N 0189345 & S/N 0160000230 to S/N 0160001775
		91415035	w/ John Deere - S/N 0160001921 to S/N 0160003058 except S/N 0160002657
		91415084	w/ John Deere - S/N 0160003213 to Present including S/N 0160002657
	1000 Hour Kit	1001128959	w/ John Deere - S/N 0189001 to S/N 0189345 & S/N 0160000230 to S/N 0160001775
		1001128958	w/ John Deere - S/N 0160001921 to S/N 0160003058 except S/N 0160002657
		2915179	w/ John Deere - S/N 0160003213 to Present including S/N 0160002657

Lull® Telehandler Filter Kits

Filtration is critical for your hydraulic and oil systems. That is why it is so important that you replace your filters with factory-approved filters and filter kits. Proper maintenance of your equipment increases productivity and helps maintain the life span of your equipment. These kits help guarantee that you have the correct filters.

Features/Benefits

- All filters included under one convenient part number
- Available in two different maintenance intervals
- Model and serial number specific
- Kits include factory-approved filters
- Help maintain and protect your investment



Machine Model	Hour Interval	Kit Part Number	Serial Number Break
644E-42	250 Hour Kit	8024038	w/ Cummins - S/N 17569 to S/N 20115 except S/N 19557, S/N 0160002519 to S/N 0160003672 except S/N 0160003489
		2915034	w/ Cummins - S/N 0160003690 to S/N 0160048716 including S/N 19557, 20118 & 0160003489
		1001158557	w/ Cummins - S/N 0160048717 to Present including S/N 0160045421
	1000 Hour Kit	8024037	w/ Cummins - S/N 17569 to S/N 20115 except S/N 19557, S/N 0160002519 to S/N 0160003672 except S/N 0160003489
		2915035	w/ Cummins - S/N 0160003690 to S/N 0160048716 including S/N 19557, 20118 & 0160003489
		1001158558	w/ Cummins - S/N 0160048717 to Present including S/N 0160045421
944E-42	250 Hour Kit	8024049	w/ Cummins - S/N 17569 to 20115 & S/N 0160002514 to S/N 0160041827 including S/N 0160041849
		1001158557	w/ Cummins - S/N 0160041827 to S/N 0160044164
		1001158559	w/ Cummins - S/N 0160044254 to S/N 0160049677
	1000 Hour Kit	1001158557	w/ Cummins - S/N 0160049678 to Present
		8024044	w/ Cummins - S/N 17569 to 20115 & S/N 0160002514 to S/N 0160041827 including S/N 0160041849
		1001158558	w/ Cummins - S/N 0160041827 to S/N 0160044164
1044C-54 Series II	250 Hour Kit	1001158560	w/ Cummins - S/N 0160044254 to S/N 0160049677
		1001158558	w/ Cummins - S/N 0160049678 to Present
		2915065	w/ John Deere - S/N 0160009654 to S/N 0160040407 except S/N 0160037824 & 0160038521
	1000 Hour Kit	1001128966	w/ Cummins - S/N 0160040413 to Present including S/N 0160037824 & 0160038521
		2915066	w/ John Deere - S/N 0160009654 to S/N 0160040407 except S/N 0160037824 & 0160038521
		1001128965	w/ Cummins - S/N 0160040413 to Present including S/N 0160037824 & 0160038521

High Pressure/High Temperature O-Ring Kit

JLG® offers you a High Pressure/High Temperature O-Ring Kit that comes with five different trays of various o-ring types and sizes.

Features/Benefits

- Designed with JLG® equipment in mind
- Higher durometer rated O-Rings for high pressure applications
- Includes one tray of the most common SAE sizes
- Two trays of back-up rings
- Two trays of Viton O-Rings
- Replacement and individual size refills available
- Bin and refill kits contain 10-20 O-Rings



Case Dimensions:
9.75 in. High
11.5 in. Wide
7.0 in. Deep

Item No. 7025683

Replacement O-Rings

Part Number	Description	Tray
7025682	Viton O-Ring Replacement Tray 1	Viton O-Ring 1
7025622	O-Ring Refill 2-010	Viton O-Ring 1
7025623	O-Ring Refill 2-011	Viton O-Ring 1
7025624	O-Ring Refill 2-012	Viton O-Ring 1
7025625	O-Ring Refill 2-013	Viton O-Ring 1
7025626	O-Ring Refill 2-014	Viton O-Ring 1
7025627	O-Ring Refill 2-015	Viton O-Ring 1
7025628	O-Ring Refill 2-016	Viton O-Ring 1
7025629	O-Ring Refill 2-017	Viton O-Ring 1
7025630	O-Ring Refill 2-018	Viton O-Ring 1
7025631	O-Ring Refill 2-019	Viton O-Ring 1
7025632	O-Ring Refill 2-020	Viton O-Ring 1
7025633	O-Ring Refill 2-021	Viton O-Ring 1
7025681	Viton O-Ring Replacement Tray 2	Viton O-Ring 2
7025634	O-Ring Refill 2-022	Viton O-Ring 2
7025635	O-Ring Refill 2-025	Viton O-Ring 2
7025636	O-Ring Refill 2-029	Viton O-Ring 2
7025637	O-Ring Refill 2-115	Viton O-Ring 2
7025638	O-Ring Refill 2-116	Viton O-Ring 2
7025639	O-Ring Refill 2-117	Viton O-Ring 2
7025640	O-Ring Refill 2-118	Viton O-Ring 2
7025641	O-Ring Refill 2-119	Viton O-Ring 2
7025642	O-Ring Refill 2-122	Viton O-Ring 2
7025643	O-Ring Refill 2-125	Viton O-Ring 2
7025644	O-Ring Refill 2-135	Viton O-Ring 2
7025678	Thin Back-Up Replacement Tray	Thin Back-Up Tray
7025667	THN BK-UP Refill - 012	Thin Back-Up Tray
7025668	THN BK-UP Refill - 013	Thin Back-Up Tray
7025669	THN BK-UP Refill - 014	Thin Back-Up Tray
7025670	THN BK-UP Refill - 015	Thin Back-Up Tray
7025671	THN BK-UP Refill - 016	Thin Back-Up Tray

Part Number	Description	Tray
7025672	THN BK-UP - 017	Thin Back-Up Tray
7025673	THN BK-UP - 018	Thin Back-Up Tray
7025674	THN BK-UP - 019	Thin Back-Up Tray
7025675	THN BK-UP - 117	Thin Back-Up Tray
7025676	THN BK-UP - 118	Thin Back-Up Tray
7025677	THN BK-UP - 119	Thin Back-Up Tray
7025680	SAE O-Ring Replacement Tray	SAE O-Ring Tray
7025645	O-Ring Refill 3-904	SAE O-Ring Tray
7025646	O-Ring Refill 3-906	SAE O-Ring Tray
7025647	O-Ring Refill 3-908	SAE O-Ring Tray
7025648	O-Ring Refill 3-910	SAE O-Ring Tray
7025649	O-Ring Refill 3-912	SAE O-Ring Tray
7025650	O-Ring Refill 3-914	SAE O-Ring Tray
7025651	O-Ring Refill 3-916	SAE O-Ring Tray
7025652	O-Ring Refill 3-920	SAE O-Ring Tray
7025653	O-Ring Refill 3-924	SAE O-Ring Tray
7025654	O-Ring Refill 3-932	SAE O-Ring Tray
7025679	Standard Back-Up Ring Replacement Tray	Std. Back-Up
7025655	STD BK-UP Refill - 012	Std. Back-Up
7025656	STD BK-UP Refill - 013	Std. Back-Up
7025657	STD BK-UP Refill - 014	Std. Back-Up
7025658	STD BK-UP Refill - 015	Std. Back-Up
7025659	STD BK-UP Refill - 016	Std. Back-Up
7025660	STD BK-UP Refill - 017	Std. Back-Up
7025661	STD BK-UP Refill - 018	Std. Back-Up
7025662	STD BK-UP Refill - 019	Std. Back-Up
7025663	STD BK-UP Refill - 116	Std. Back-Up
7025664	STD BK-UP Refill - 117	Std. Back-Up
7025665	STD BK-UP Refill - 118	Std. Back-Up
7025666	STD BK-UP Refill - 119	Std. Back-Up

Standard O-Ring Kit

Make sure that all your service technicians have the proper O-Ring with a JLG® Standard O-Ring Kit.

Features/Benefits

- Specially designed for JLG equipment owners
- 30 different types with a total of 561 O-Rings
- Comes with a guide for easy O-Ring identification
- Great for shops or service trucks
- Replacement O-Rings available



Item No. 7019620

Replacement O-Rings

Part Number	Quantity	Part Number	Quantity
7019625	30	7019640	8
7019626	30	7019641	20
7019627	30	7019642	20
7019628	30	7019643	20
7019629	30	7019644	10
7019630	10	7019645	15
7019631	10	7019646	15
7019632	15	7019647	10
7019633	15	7019648	10
7019634	15	7019649	30
7019635	15	7019650	30
7019636	15	7019651	30
7019637	10	7019652	15
7019638	30	7019653	20
7019639	8	7019654	15

Below is a list of service kits for control valve, part number 4640716.

These service kits are not included in the Standard O-Ring Kit, but can be purchased from JLG.

Part Number	Description
7012509	Seal Kit (Sequence) (Hydraforce Version)
7010557	Seal Kit (Sequence) (Vickers/Modular Controls Version)
7012510	Seal Kit (Pressure Reducing) (Hydraforce Version)
7010558	Seal Kit (Pressure Reducing) (Vickers/Modular Controls Version)
7012511	Seal Kit (Main Relief) (HydraForce Version)
7010559	Seal Kit (Main Relief) (Vickers/Modular Controls Version)
2900709	Seal Kit (Dump) (Hydraforce Version)
7010560	Seal Kit (Dump) (Vickers/Modular Controls Version)

AMP/TYCO Connector Kit

Features/Benefits

- All of the most popular AMP/Tyco connectors and pins used on JLG® equipment
- Packaged in one convenient box
- Replacement items available
- Suitable for shop or service trucks
- Can be utilized on anything with AMP/Tyco connectors or pins
- Reduced component pricing when purchased as a kit



Item No. 1001148902

Replacement Connector Components

Part Number	Description	Quantity
70011037	32 Compartment Box	1
70011029	AMP Cover Decal	1
70011034	AMP Legend Decal	1
4660320	Plug Connector Terminal	10
4660321	Plug Connector Terminal	5
4460225	Plug Terminal	5
4460265	Connector Plug Terminal	5
4460343	Plug 12-CIR Terminal	2
4460434	CONN 15 Pin MAT-N-LOC Terminal	5
4460873	Black 35 POS AMPSEAL Terminal	1
4460874	Natural 35 POS AMPSEAL Terminal	1
4460260	Housing Terminal	20
4460424	Plug Terminal	5
4460890	Tab Housing AMP 2 POS Terminal	2
4460761	Housing MATE-N-LOC 4 POS Terminal	5
4460224	Receptacle Terminal	5
4460266	Connector Cap Terminal	5
4460708	Recpt 15 Pin Mate-N-Lock Terminal	5
4460905	Hole Seal Plug Ampseal Terminal	25
210034	Contact Male MNL 20-14V AMP	25
4460267	Pin Contact Terminal	100
4460227	Pin Contact Terminal	100
4460226	Contact Terminal	100
70001444	Pin	25
4460621	Socket Terminal	25
4460268	Socket Contact Terminal	100
4460906	Socket AMP 10-12 GA Terminal	25
4460871	Socket 18 GA AMPSEAL Terminal	100
4460259	Positive Lock Terminal	50
4460889	16-18 GA Terminal	25
4460829	Receptacle 0.25 in. Terminal	25



Deutsch DT Connector Kit

Features/Benefits

- All of the most popular Deutsch DT connectors and pins used on JLG® equipment
- Packaged in one convenient box
- Replacement items available
- Suitable for shop or service trucks
- Can be utilized on anything with Deutsch DT connectors or pins
- Reduced component pricing when purchased as a kit

Item No. 1001148903

Replacement Connector Components

Part Number	Description	Quantity
70011037	32 Compartment Box	1
70011028	Deutsch DT Cover Decal	1
70011033	Deutsch DT Legend Decal	1
4460891	2 Position DT Series Terminal	2
4460539	Plug Terminal	2
4460911	Housing Sealed 3 Position Terminal	2
4460884	4 Pin Deutsch Terminal	2
4460894	6 Pos Plug Terminal	2
4460930	Plug DT06-8SA Kit Terminal	2
4460933	12 POS DT Plug Terminal	2
4460897	2 Pin Receptacle Terminal	2
4461017	2 Position 12 GA Terminal	2
4460945	3 Way Tee Receptacle Terminal	1
4460910	Sealed 3 Pos Receptacle Terminal	2
4460899	6 Pin Deutsch Receptacle Terminal	2
4460931	Receptacle DT04-8S Kit Terminal	2
4460466	Sealing Plug Terminal	50
77363349	Seal Plug #20-24 Terminal	25
4460464	Terminal	100
4460943	Pin #16 Terminal	50
4460929	Pin Deutsch Terminal	50
4460917	Pin Deutsch DTM Series Terminal	25
4460508	Pin Terminal	100
4460941	Pin #16-#14 Wire Terminal	25
4460942	Socket #16-#14 Wire Terminal	25
4460509	Socket Terminal	100
4460465	Socket Terminal	100
4460944	Socket #16 Terminal	50
4460928	Socket 18 GA Deutsch Terminal	50
4460918	Socket Deutsch DTM Series Terminal	25

Deutsch HD Connector Kit

Features/Benefits

- All of the most popular Deutsch HD connectors and pins used on JLG® equipment
- Packaged in one convenient box
- Replacement items available
- Suitable for shop or service trucks
- Can be utilized on anything with Deutsch HD connectors or pins
- Reduced component pricing when purchased as a kit



Item No. 1001148904

Replacement Connector Components

Part Number	Description	Quantity
70011037	32 Compartment Box	1
70011027	Deutsch DT Cover Decal	1
70011032	Deutsch DT Legend Decal	1
77363233	Plug Socket Connector	1
4461015	Deutsch HDP26-18-14SE Terminal	1
4460491	Plug Terminal	1
4460754	Plug Deutsch Terminal	1
4460865	HD34-24-19 SE Series Terminal	1
4460614	Plug 21 Pin Terminal	1
4460462	Connector Plug Terminal	1
4460481	Connector Plug Terminal	1
4460502	Plug Terminal	1
77363232	Deutsch Receptacle Connector	1
4461016	Terminal	1
4460495	Connector Terminal	1
4460866	HD34-24-19 PE Series Terminal	1
4460613	21 Pin Receptacle Terminal	1
4460480	Receptacle Terminal	1
4460463	Receptacle Terminal	1
4460503	Receptacle Terminal	1

Part Number	Description	Quantity
4460466	Sealing Plug Terminal	50
77363349	Seal Plug #20-#24	25
4460464	Terminal	50
4460943	Pin #16 Terminal	50
4460929	Pin Deutsch Terminal	50
4460917	Pin Deutsch DTM Series Terminal	25
4460508	Pin Terminal	50
4460941	Pin #16-#14 Wire Terminal	25
4460942	Socket #16-#14 Wire Terminal	25
4460509	Socket Terminal	50
4460465	Socket Terminal	50
4460944	Socket #16 Terminal	50
4460928	Socket 18 GA Deutsch Terminal	50
4460918	Socket Deutsch DTM Series Terminal	25
4460492	Terminal Clamp	2
4460471	Terminal Lockwasher	3
4460470	Terminal Nut	3
4460496	Terminal Lockwasher	3
4460497	Terminal Nut	3



Delphi/Packard Connector Kit

Features/Benefits

- All of the most popular Delphi/Packard connectors and pins used on JLG® equipment
- Packaged in one convenient box
- Replacement items available
- Suitable for shop or service trucks
- Can be utilized on anything with Delphi/Packard connectors or pins
- Reduced component pricing when purchased as a kit

Item No. 1001148905

Replacement Connector Components

Part Number	Description	Quantity
70011037	32 Compartment Box	1
70011029	Packard Cover Decal	1
70011034	Packard Legend Decal	1
80963057	2 Pass Weather Pack Terminal	5
4460955	Delphi Series 150.2 Terminal	3
4460459	Connector Terminal	5
4460460	Connector Terminal	5
80963061	Weather Pack 4 Pos Connector	2
4460461	Connector Terminal	2
4460374	Plug Terminal	3
80963055	Weather Pack 1 POS	3
80963056	Weather Pack 1 POS Connector	3
4461157	2 POS Packard Terminal	5
1001117059	Packard 56 SER 3 POS Connector	5
80963062	4 POS Shroud	2
80963064	6 POS Shroud	2
4460789	Seal Terminal	25
80963067	Cable Seal	50
4460458	Seal Terminal	50
4460608	Seal (Red) Terminal	25
80963070	Cavity Plug	25
4460693	Male Metri-Pack 150 Terminal	25
4460979	Packard 18 GA Male Terminal	25
4460475	Male (Pin) Terminal	25
4460589	Sealed Female Metri-Pack	25
4460746	Packard Metripack Terminal	25
4460457	Female Sleeve Terminal	25
4460419	Female Terminal	75
4460842	Female Metri-Pack 150 Terminal	25

Miscellaneous Connector Kit

Features/Benefits

- All of the most popular miscellaneous connectors and pins used on JLG® equipment
- Packaged in one convenient box
- Replacement items available
- Suitable for shop or service trucks
- Can be utilized on anything with miscellaneous connectors or pins
- Reduced component pricing when purchased as a kit



Item No. 1001148906

Replacement Connector Components

Part Number	Description	Quantity
70011037	32 Compartment Box	1
70011031	Miscellaneous Cover Decal	1
70011036	Miscellaneous Legend Decal	1
70001703	Male 9 Pin Plug	1
70010706	Male 9 Pin Plug	2
4460418	Connector Toggle Switch Terminal	2
4460868	Molex Mini Fit JR 39 Terminal	2
4460870	Molex Mini Fit JR 39 Terminal	2
4460715	Connector Terminal	2
4460716	13 Position Phoenix Terminal	2
4460717	6 Position Phoenix Terminal	2
4460718	10 Position Phoenix Terminal	2
4460719	9 Position Phoenix Terminal	2
1001117082	Carling Rocker Switch Connector	3
1001117079	Carling Rocker Switch Connector	3
7023498	Connector Clipper Terminal	2
70001798	Connector	2
70001799	Male Pin	50
7023499	Pin Terminal	50
4460799	Male Pin 16 GA Terminal	5
4460375	Terminal	50
70001705	Female Socket	25
70001708	Female Socket	25
4460877	Molex Female Terminal	50
4460721	Socket Female Terminal	25
4461023	Socket Gold Terminal	25
4460887	Molex 12GA Terminal	25
4460018	Lug Terminal	25
4460035	Connector Solderless Terminal	25
4460248	Buttsplice Terminal	25
71956	18-14 Scotch Terminal	20
4460702	Ring 18-22 GA 1/4 in. Terminal	25
4460043	Eye Terminal	25
4460312	Ring 1/4 in. Stud Terminal	25
4460019	Lug Terminal	25



Fuse Kits

JLG® ATC and ATM Fuse Kits include 50 individual fuses and a fuse puller all neatly organized in a carrying case, making it great for the shop or service trucks. These fuse kits are for universal use, and replacement packets are available for purchase.

Features/Benefits

- Great for the shop or service truck
- Carrying case to keep fuses organized
- Fuse Kits and Replacement Packets labeled in six languages
- Excellent over-the-counter retail opportunity

Kit Part Number: 70010267

Replacement Packet Part Number	Fuse Style	Amperage Size	Package Quantity
8229252-005	Mini Blade	2	5
8229249-005	Mini Blade	3	5
70010265-005	Mini Blade	4	5
8229242-005	Mini Blade	5	5
8229243-005	Mini Blade	7.5	5
2400061-005	Mini Blade	10	5
8229244-005	Mini Blade	15	5
2400070-005	Mini Blade	20	5
8229247-005	Mini Blade	25	5
8229245-005	Mini Blade	30	5

Kit Part Number: 70010266

Replacement Packet Part Number	Fuse Style	Amperage Size	Package Quantity
8229263-005	Regular Blade	3	5
70010264-005	Regular Blade	4	5
8229261-005	Regular Blade	5	5
8229233-005	Regular Blade	7.5	5
8229234-005	Regular Blade	10	5
8229237-005	Regular Blade	15	5
8229235-005	Regular Blade	20	5
8229262-005	Regular Blade	25	5
8229236-005	Regular Blade	30	5
8229238-005	Regular Blade	40	5

Kit Part Number: 70010268

Replacement Packet Part Number	Fuse Style	Amperage Size	Package Quantity
70010269-003	Maxi Blade	20	3
70010270-003	Maxi Blade	30	3
70010271-003	Maxi Blade	40	3
70010272-003	Maxi Blade	50	3
70010273-003	Maxi Blade	60	3

JLG Industries, Inc.

1 JLG Drive
McConnellsburg, PA 17233-9533
Telephone 717-485-5161
Toll-free in US 877-JLG-LIFT
Fax 717-485-6417

www.jlg.com

An Oshkosh Corporation Company

Part No.: 401003
R0715
Printed in USA

